

TARGA SYSTEM®

**GARANZIA
5 ANNI**

Telecamere fisse

TS 4MPX-BASIC

Lettura targhe free flow

Telecamera Fissa con Streaming video e cattura immagine in contemporanea e lettura della targa. Riconoscimento di **targa del veicolo di più di 50 paesi Europei**.

Possibilità di configurazione avanzata del dispositivo.

Osd, esposizione video e lettura delle targhe indipendenti.


TS 123456

Lettura
targhe



Configurazione
avanzata



In ogni
condizione



Tecnologia
anpr ocr

Fino a
99,2%
di letture corrette

OCR da
4 Mpx
di risoluzione

Fino a
70°
angolo di lettura

SOLUZIONI PROGETTATE
PER LE FORZE
DELL'ORDINE



Veicoli e targhe rubate



Veicoli in black list o sequestri



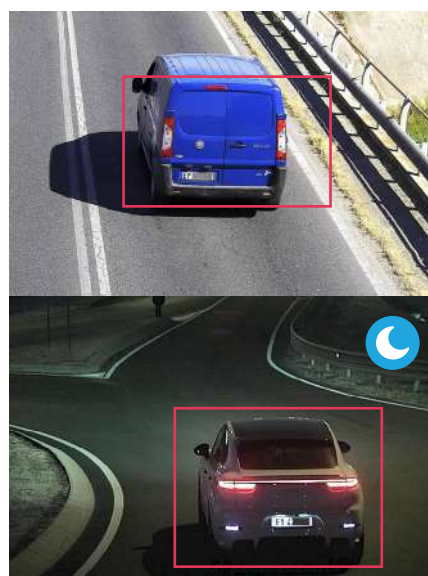
Non assicurati o revisionati



Fino a 2 corsie

Funzionalità

- OCR integrato nella telecamera
- Lettura free flow o con colleg. a dispositivi esterni
- Memoria interna fino a 128 gb
- Lettura targhe a colori
- Lettura codice Kemler
- Led IR integrati
- Registrazione flusso video ONVIF Rtp/Rtsp
- Interfaccia per configurazione e visione transiti
- Caric. su memoria interna di Black e White list
- Ottica motorizzata 8-32 mm (con autofocus)
- Alimentazione PoE+





Telecamere fisse

TS 4MPX - BASIC

Lettura targhe free flow

| Camera | |
|-------------------------|-------------------------------------------------------------------------------------------------------------------------------------------------------------------------------------------------------------|
| Image Sensor | 1/1.8" Progressive Scan CMOS |
| Min. Illumination | Color: 0.001 Lux @ (F1.2, AGC ON), 0.0001 Lux with IR |
| Shutter Speed | 1/25 s to 1/100,000 s |
| Slow Shutter | Yes |
| Day & Night | IR Cut Filter |
| Digital Noise Reduction | 3D DNR |
| WDR | 140 dB |
| Lens | |
| Focal Length | 4 to 11 mm, 8 to 32 mm |
| Aperture | 4 to 11 mm :F1.38, 8 to 32 mm:F1.63~1.8 |
| Focus | Auto |
| FOV | 4 to 11 mm, horizontal FOV 114.7° to 41.9°, vertical FOV 59.4° to 23.6°, diagonal FOV 141.5° to 48.1° 8 to 32 mm, horizontal FOV 39.7° to 15.9°, vertical FOV 22.3° to 9.1°, diagonal FOV 45.8° to 18.1° |
| Auto-iris | DC drive |
| IR | |
| IR Range | 4 to 11 mm, Up to 50 m 8 to 32 mm, Up to 100 m |
| Wavelength | 850 nm |
| Compression Standard | |
| Video Compression | Main stream: H.265/H.264/MJPEG Sub-stream: H.265/H.264/MJPEG |
| H.264 Type | Baseline Profile/Main Profile/High Profile |
| H.265 Type | Baseline Profile/Main Profile/High Profile |
| Video Bit Rate | 32 Kbps to 16 Mbps |
| Audio Compression | G.711/G.722.1 |
| Audio Bit Rate | 8Kbps (G.711) /16Kbps (G.722.1) |
| Smart feature | |
| Recognition | License Plate Recognition |
| Smart Function | No-plate vehicle capture, driving direction detection |

| Road Traffic and Vehicle Detection | |
|----------------------------------------------------------------------|----------------------------------------------------------------------------------------------------------------------------------------------------------------------------------------------------------------------------------------------------------------------------------------------------------------------------------------------------------------------------------------------------------------------------------------------------------------------------------------------------------------------------------------------------------------------------------------------------------------------------------------------------------------------------------------------------------------------------------------------------------------------------------------------------------------------------------------------------------------------------------------------------|
| Countries/Regions | <p>Mid-East: Turkey, United Arab Emirates, Qatar, Iran, Iraq, Egypt, Jordan, Kuwait, Saudi Arabia, Tunisia, Palestine, Pakistan</p> <p>Africa: South Africa, Kenya, Nigeria, Tanzania, Mauritius, Morocco</p> <p>Asia-Pacific: Australia, New Zealand, Indonesia, Malaysia, Singapore, South Korea, Thailand, Vietnam, the Philippines, Hong Kong, Macao, Taiwan, Burma, Japan, India, Mongolia</p> <p>America: United States of America, Colombia, Brazil, Ecuador, Peru, Mexico</p> <p>Europe: Croatia, Slovakia, Czech Republic, Bulgaria, Macedonia, Hungary, Greece, Poland, France, Netherlands, Switzerland, Spain, United Kingdom, Ireland, Germany, Italy, Austria, Israel</p> <p>Russian-Speaking Regions: Azerbaijan, Belarus, Kazakhstan, Lithuania, Georgia, Estonia, Latvia, Russian Federation, Ukraine, Moldova, Belarus, Uzbekistan</p> |
| Accuracy (Under recommended installation and lighting conditions) | <p>Capture rate > 99% till 180 KM/h Driving direction recognition accuracy > 98.5% Mistaken capture rate < 1.5% (entrance/exit), < 2%</p> <p>Capture rate > 99% till 180 KM/h Driving direction recognition accuracy > 98.5% Mistaken capture rate < 1.5% (entrance/exit), < 2%</p> |
| No License Plate Detection | Yes |
| Motorcycle LPR | Yes |
| Image | |
| Max. Resolution | 2688 × 1520 |
| Main Stream | 50 Hz: 25 fps (2688 × 1520, 1920 × 1080, 1280 × 720, 704 × 576, 352 × 288) 60 Hz: 30 fps (2688 × 1520, 1920 × 1080, 1280 × 720, 704 × 576, 352 × 288) |
| Sub-Stream | 50 Hz: 25 fps (1920 × 1080, 1280 × 720, 704 × 576, 352 × 288) 60 Hz: 30 fps (1920 × 1080, 1280 × 720, 704 × 576, 352 × 288) |
| Third Stream | 50 Hz: 25 fps (1280 × 720, 704 × 576, 352 × 288) 60 Hz: 30 fps (1280 × 720, 704 × 480, 640 × 480) |
| Image Settings | Rotation mode, saturation, brightness, contrast, sharpness, AGC, and white balance are adjustable via client software or web browser. |
| SVC | H.264 and H.265 encoding |
| Day/Night Switch | Auto/Scheduled/Triggered by alarm in |
| Video Overlay | Logo picture can be overlaid on video with 128 × 128 in 24-bit bitmap format |
| Network | |
| Network Storage | microSD/TF card (128 GB), local storage, CVR, NVR, ANR |
| Alarm Trigger | HDD Error, Network Disconnected, IP Address Conflicted, Vehicle Detector Exception, Traffic Light Detector Exception |
| Protocols | TCP/IP, HTTP, HTTPS, FTP, DNS, DDNS, RTP, RTSP, RTCP, NTP, UPnP, IPv6, UDP |
| Security Measures | Password protection, HTTPS encryption, digest authentication for HTTP/HTTPS, digest authentication for ONVIF (Version 2.1) |
| General Function | One-key reset, three streams, heartbeat, password protection, watermark |
| API | ONVIF (Version 2.1), ISAPI, SDK |
| Simultaneous Live View | Up to 20 channels |
| User/Host | Up to 32 users. 3 user levels: administrator, operator, and user |
| Client | iVMS-4200, Hik-Connect, Hik-Central |
| Web Browser | IE7+ |
| Interface | |
| Audio | Yes |
| Communication Interface | 1 RJ45 10M/100M/1000M Ethernet interface, 1 RS-485 interface, Wiegand interface |
| Alarm | 1 input, 1 output, 2 relays |
| Video Output | Network |
| On-Board Storage | Built-in microSD/TF card, up to 128 GB |
| Reset Button | Yes |

| General | |
|----------------------|-------------------------------------------------------------------------------------------------------------------------------------|
| Firmware Version | 2688 × 1520 |
| Operating Conditions | Temperature: -30 °C to +70 °C [-22 °F to +158 °F] , -H: -40 °C to +60 °C [-40 °F to +140 °F] Humidity: 95% or less (non-condensing) |
| Power Supply | 12 VDC to 24 VDC ± 20%, PoE (802.3at, class 4) |
| Power Consumption | Max.35 W |
| Protection Level | IP67, IK10 |
| Heater | -H: yes |
| Material | Aluminum alloy |
| Dimensions | With package: 428.5 × 120 × 132.8 mm (16.87" × 4.72" × 5.23") |
| Weight | Camera: approx. 3.12 ± 0.5 kg (6.88 ± 1.1 lb) |

* Listed resolutions are only selectable options. It does not mean that all streams can work at their maximum resolution at the same time.

*-H: Heater supported