

Vorpa **FOAM FOR ROOFING**

Self-expanding polyurethane foam

products group and information



**FOAM FOR ROOFING
GUN TYPE**

To fix:

- pipes insulation
- roofing tiles fixings
- fillings and finishing touches
- fixing of Insulating panels
- windows and doors frames
- chimney flues insulation

Characteristics

- self-expanding one component polyurethane foam available in gun types
- state: liquefied gas in pressure content
- it expands and hardens with air humidity
- suitable for repairing of roofing
- high adhesion to most of the building materials
- volume variation 0%
- flammable Class B3
- after setting it can be treated mechanically
- chemical agents, moulds and micro-organisms resistant

Suggerimenti per l'uso

Suggestion for use

Shake before using. The surface of application must be well cleaned. Remove dust, oil and grease. Surfaces must be moistened with water. Apply upward. In presence of wide hollow materials it is suggested to repeat the application after setting. The application can be interrupted in any moment, leave the bottle turned on the gun till completely empty. Avoid any contact with sources of ignition, heat, flames. Not suitable on PE, PP, PC, PMMA, PTFE, soft plastic, neoprene, bituminous substrate, do not use in flooded holes.



Examples of applications



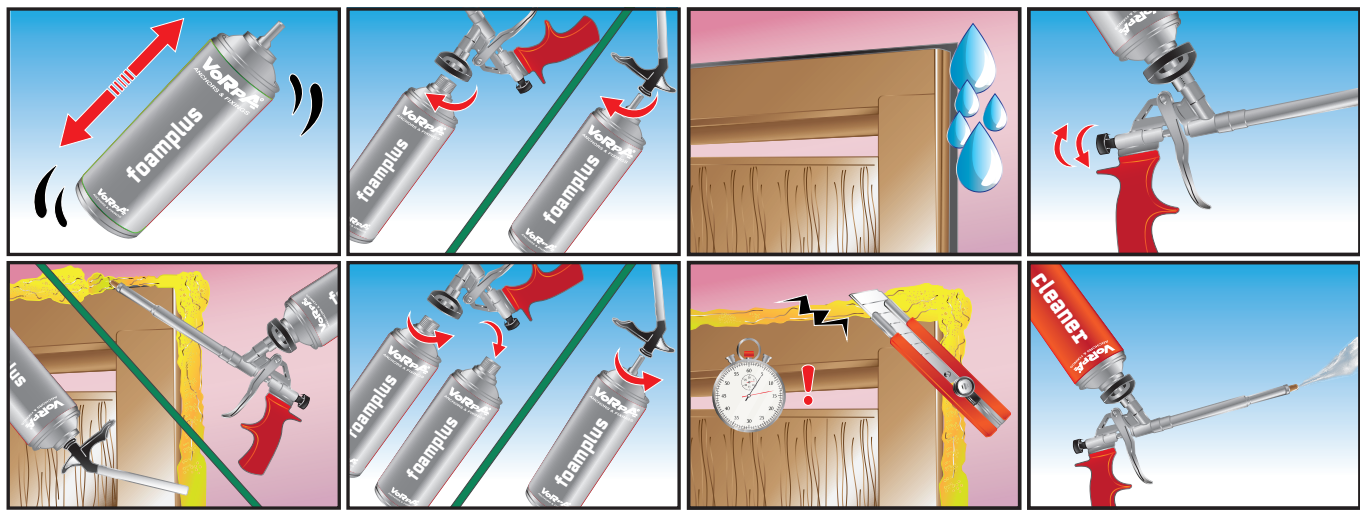
chemical anchors

Vorpa FOAM FOR ROOFING

Self-expanding polyurethane foam

installation sequence

Stability load bearing 18 hours



Clean the surfaces before the installation

product code and temperatures

Code	Description	Content ml	Colour	Skin formation time min.	Can be cut min.	Temperature resistance C°	Application temperature C°	Shelf life
3604A	FOAM ROOFING GUN TYPE	750	grey	8-12 min	30-50 min	-40°C ÷ +90°C	+5°C ÷ +35°C	18 months

Store upright

Examples of applications

