

Vorpa VSP P Ø23

Steel anchor for scaffolds standing on the ground



products group



Suitable for

- concrete

To fix

- scaffolding standing on the ground
- tensioning ropes
- chains



Test report available

product information

Characteristics

- galvanized steel welded eyebolt Ø23mm with VSP or VSX expansion body
- the eyebolt can be used several times thanks to the anchor spare part
- the special nylon washer avoids the seepage of water through the external hole
- the anchor grants safe and easy applications thanks to mark on the eyebolt stem enabling a right embedment depth during the anchoring
- smooth expansion thanks to the three cuts on the expansion body

Installation

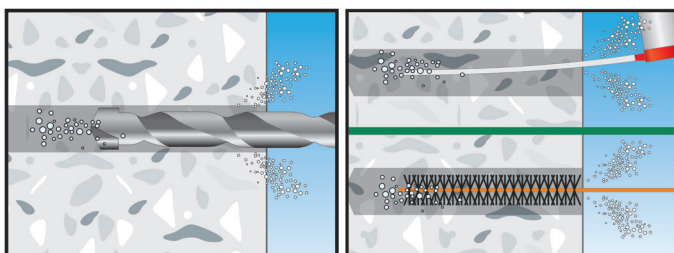
- to be mounted aligned the wall

Suggestion for use

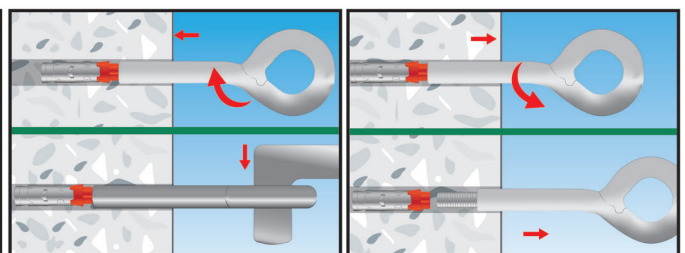
- make sure the scaffold and eyebolt are well positioned each other
- apply a proper safety factor according to the each situation
- always check load bearing capacity values in the table
- respect the installation data
- **clean the hole before the installation**

installation sequence

1) installation procedure



2) to re-use the eyebolt



Examples of applications



Vorpa VSP P Ø23

Steel anchor for scaffolds standing on the ground

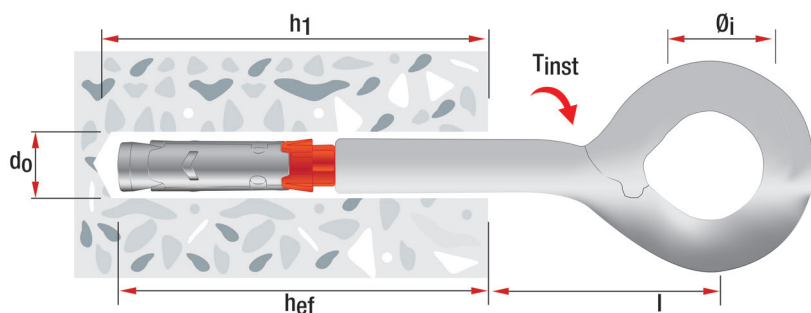


product code and technical data



VSP P
eyebolt Ø23

Code	Description	d _o mm	h ₁ mm	h _{ef} mm	Axial spacing h _{ef} +l	Ø _i mm	Expansion body M8	T _{inst} mm
9882	VSP P 12/130	12	80	80	130	23	12x45	25
9880	VSP P 12/180	12	95	80	180	23	12x55	25
881	VSP P 12/215	12	85	80	215	23	12x45	25



d_o = Hole diameter
 h₁ = Min. hole depth
 h_{ef} = Min. anchorage depth
 l = Axial spacing
 Ø_i = Eyebolt internal diameter
 T_{inst} = Torque

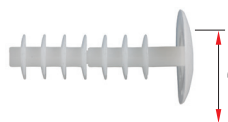
Accessories



code 2833



code 3972



code 840

Code	Description	d _o mm	Length mm	C mm
2833	Washer 12x32x4			
3972	VSP P 12 M8	12		
2840	CFP cap hole covering	12/14	37	26

VSP P

Pull-out values in daN for applications on concrete C20/25

1 daN ≈ 1 kg

1.500

ATTENTION: An appropriate safety factor ≥ 3 should be applied on these values

- As for applications on natural stones and solid bricks it is not possible to show specific loading values because of the various materials properties
- It is suggested to always make pull out tests before using the anchors
- For any particular need please contact Vorpa technical department
- A too high torque moment during the installation may cause permanent deformations and even the breaking of the threaded part affecting the eyebolt resistance