

through-setting heavy duty anchors

## Vorpa **VHS** security anchor

Steel anchor



concrete



natural  
stone



solid brick

### products group



- \* **VHS AE**  
with stud and A2  
stainless steel shear  
nut

#### Suitable for

- concrete
- natural stone
- solid brick

#### To fix

- window and door frames
- gates
- railings
- iron bars
- traffic signals
- garden fittings



- \* **VHS Z**  
with stud and A2  
stainless steel shear  
nut



**VHS AF**  
with stud and steel  
shear nut AF



- \* **VHS CX**  
**VHS CX INOX A2**  
with steel Torx bit  
screw



### product information

#### Characteristics

- through steel anchor with slots on the body and on the expansion conical nut completed of shear nut.
- smooth expansion thanks to the slots on the body and on the expansion conical nut
- high setting quickness through the object to be fixed
- high performances
- shear nut

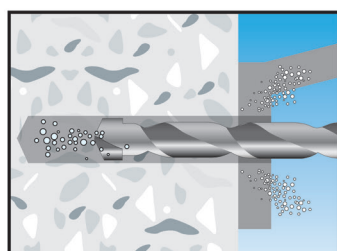
#### Installation

- through-setting anchor

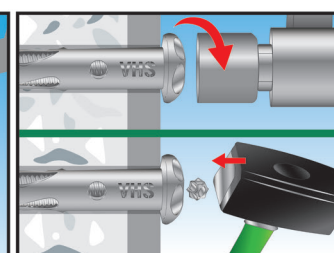
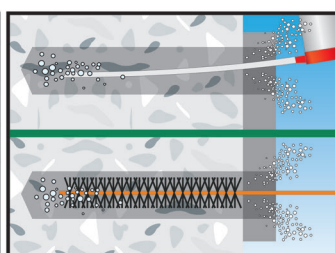
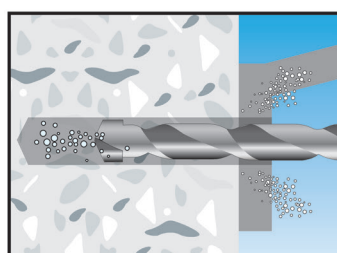
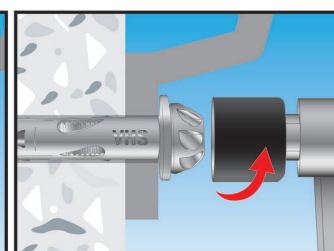
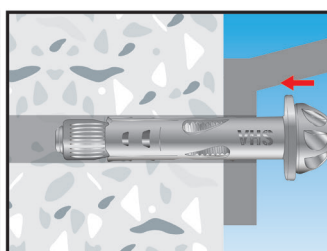
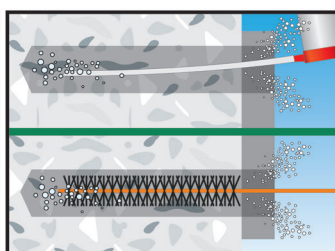
#### Suggestion for use

- choose the right size of the anchor according to the load
- always check load bearing capacity values in the table
- respect the installation data
- **clean the hole before the installation**

### installation sequence



Anchor VHS AF



Anchor VHS CX - VHS CX INOX A2

through-setting heavy duty anchors

## Vorpa VHS security anchor

Steel anchor



### product code and technical data

#### VHS AF security anchor

VHS AF sleeve anchor is a through fixing, thus ensuring fast and simple installation. Ideal for many security applications in a wide variety of base materials. The unique AF drive permanent nut offers an accurate torque controlled security fixing which can be re-torqued if necessary. Reduced hole diameter compared to TOP version.



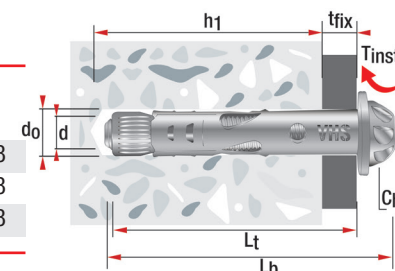
VHS AF  
with stud and steel  
shear nut AF



AF DRIVER SOCKET AND AF  
PERMANENT NUT

Code	Description	$L_t$ mm	Screw $d \times L_b$ mm	$d_o$ mm	$h_1$ mm	$t_{fix}$ max mm	$T_{inst}$ Nm	Ch
7517	VHS AF 10/5-50	50	M8x55	10	55	5	15	AF M8
7510	VHS AF 10/25-70	70	M8x75	10	55	25	15	AF M8
7512	VHS AF 10/55-100	100	M8x100	10	55	55	15	AF M8

Code	Description	Internal thread	Nut	TOP AF anchor
72589	AF M8		art. 72590	art. 7578/7562/7563
72592	AF M10		art. 72591	-
72590	DADO AF M8	M8		
72591	DADO AF M10	M10		



$h_1$  = Min. hole depth  
 $L_t$  = Anchor length  
 $L_b$  = Stud length  
 $d_o$  = Hole diameter  
 $d$  = Screw diameter  
 $t_{fix}$  = Fixture thickness  
 $t_{inst}$  = Torque  
 $Ch$  = Spanner

#### VHS CX-VHS CX INOX A2 security anchor

Security anchors for final fixing of windows, iron fences, gates, etc. granting protection against burglary and thievery. Head screw is characterized by Torx bit T40. Zamak star must be hammered into Torx bit making the anchor impossible to remove. Reduced hole diameter compared to TOP version.



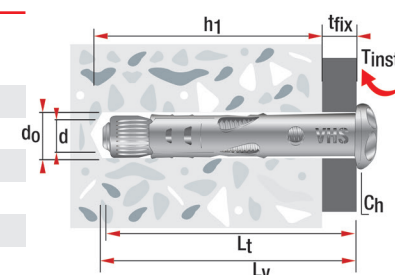
VHS CX  
with steel Torx bit screw



VHS CX INOX A2  
with A2 stainless steel Torx bit  
screw



Code	Description	$L_t$ mm	Screw $d \times L_v$ mm	$d_o$ mm	$h_1$ mm	$t_{fix}$ max mm	$T_{inst}$ Nm	Torx bit
50517	VHS CX 10/15-60	60	M8x60	10	55	15	25	T40
50510	VHS CX 10/35-80	80	M8x80	10	55	35	25	T40
50511	VHS CX 10/55-100	100	M8x100	10	55	55	25	T40
60517	VHS CX A210/15-60	60	M8x60	10	55	15	25	T40
60510	VHS CX A2 10/35-80	80	M8x80	10	55	35	25	T40
60511	VHS CX A2 10/55-100	100	M8x100	10	55	55	25	T40



#### Examples of applications



through-setting heavy duty anchors

## Vorpa VHS security anchor

Steel anchor



concrete



natural  
stone



solid brick

### product code and technical data

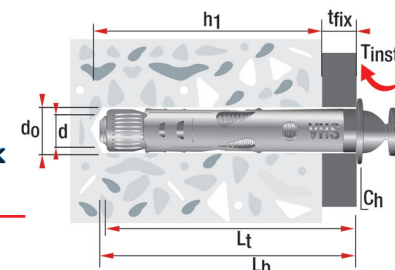
#### VHS Z security anchor

Security anchors with shear nut for final fixing of windows, iron fences, gates, etc. Suitable for every compact building materials. Exceeding a torque of 19 Nm the hexagonal head takes off giving no chance to slip off the fixing. Hexagonal head and washer are made in A2 Stainless Steel.

Reduced hole diameter compared to TOP version.



**VHS AE**  
with stud and A2 stainless  
steel shear nut



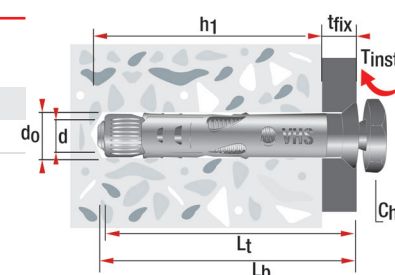
$h_1$  = Min. hole depth  
 $L_t$  = Anchor length  
 $L_b$  = Stud length  
 $d_0$  = Hole diameter  
 $d$  = Screw diameter  
 $t_{fix}$  = Fixture thickness  
 $t_{inst}$  = Torque  
 $Ch$  = Spanner

Code	Description	$L_t$ mm	Screw $d \times L_b$ mm	$d_0$ mm	$h_1$ mm	$t_{fix}$ max mm	$T_{inst}$ Nm	Ch
517	VHS AE 10/10-55	55	M8x60	10	55	10	*	15
510	VHS AE 10/30-75	75	M8x75	10	55	30	*	15
512	VHS AE 10/60-105	105	M8x100	10	55	60	*	15

\* Approximate breaking torque at 19Nm



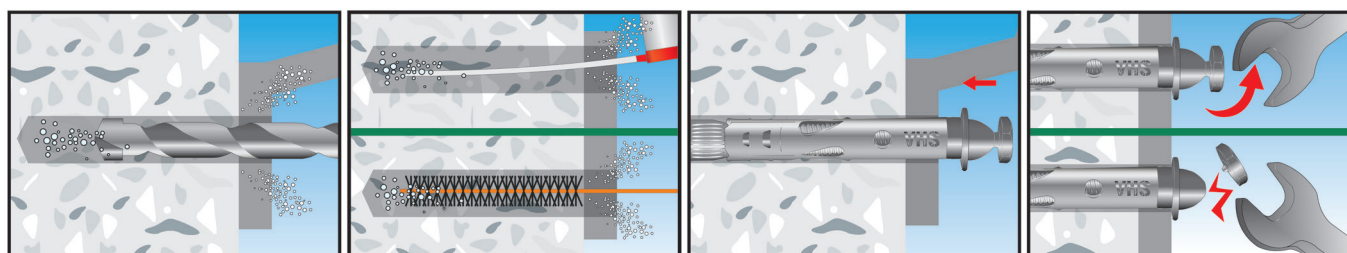
**VHS Z**  
with stud and A2 stainless  
steel shear nut



Code	Description	$L_t$ mm	Screw $d \times L_b$ mm	$d_0$ mm	$h_1$ mm	$t_{fix}$ max mm	$T_{inst}$ Nm	Ch
2588	VHS Z 10/18-65	65	M8x60	10	55	18	*	15
2510	VHS Z 10/38-85	85	M8x80	10	55	38	*	15

\* Approximate breaking torque at 19Nm

### installation sequence



#### VHS security anchor

				VHS M8
Critical axial spacing	$S_{cr}$	mm		240
Critical edge distance	$C_{cr}$	mm		120
Minimum axial spacing	$S_{min}$	mm		120
Minimum edge distance	$C_{min}$	mm		60
Minimum structural thickness	$h_{min}$	mm		100

Permissible loads - applications in concrete C20/25

1 daN  $\approx$  1 kg

VHS AF - VHS Z - VHS AE 10 - M8	daN	200
VHS CX cl. 8.8 10 - M8	daN	230
VHS CX INOX A2 10 - M8	daN	230

- Always respect the installation parameters
- In case of axial spacings or edge distances are inferior than the critical ones, it is recommended to reduce the application load
- The table shows the permissible loads for tension, shear and combined tension and shear loads