

Vorpa WING TOGGLE VBF M10

Universal lighth fixing for plasterboard

products group



VBF M10
Art. 5678
with stud, nuts, washers

- **Suitable for**
- floors with alveolar core
- gypsum fibra
- paving in perforated blocks
- metal profiling
- cavity in general
- cavity foor slabs made from bricks and concrete

- To fix**
- countertops
- collars for exhaust pipes
- heavy ducts
- suspended profiles



VBF M10
Art. 5677
wing toggle M10



Test report available

product information

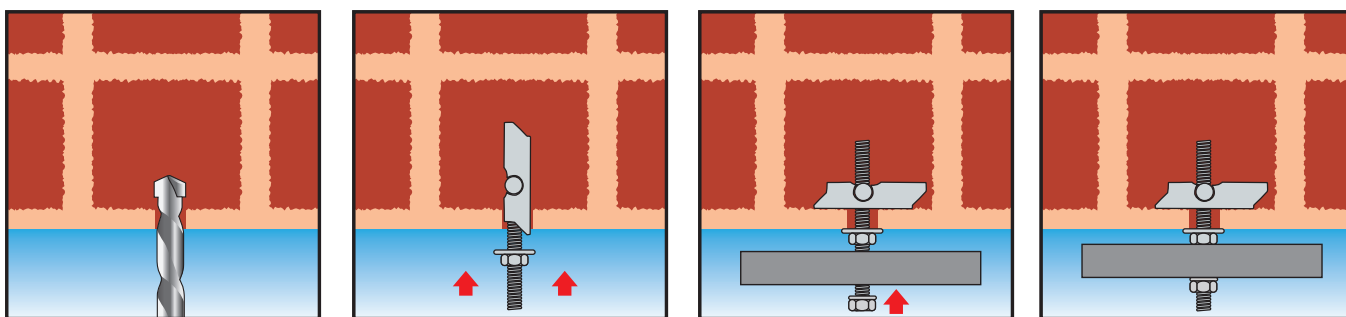
Characteristics

- steel wing toggle with self-locking folding crosspiece inside the cavity
- suitable for fixings on perforated panels, panels of gypsum-fibra, prestressed concrete with alveolar core, corrugated metal profiles, cavities in general
- allows the application of very heavy loads
- possibility to add other accessories as bolts and eyelets hooks

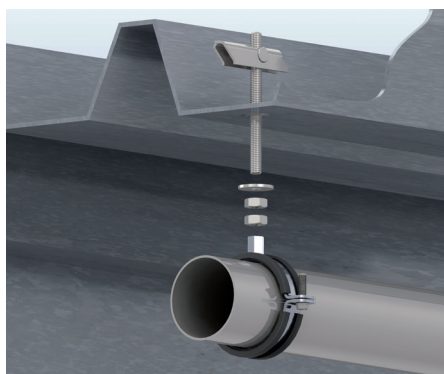
Suggestion for use

- always consider an appropriate safety factor
- check load bearing capacity values
- respect the installation data

installation sequence



Examples of applications



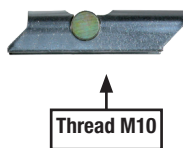
Vorpa WING TOGGLE VBF M10

Universal lighth fixing for plasterboard

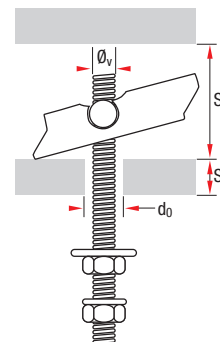
product code and technical data



VBF M10 - Art. 5678
with stud, nuts, washers



VBF M10 - Art. 5677
wing toggle M10



- Ø_v = Screw diameter
- d_o = Hole diameter
- S_c = Thickness of the fixture
- S_v = Interspace
- L_v = Stud length

Code	Description	Ø _v mm	d _o mm	S _c mm	S _v mm	L _v mm
5677	VBF M10 WING TOGGLE					
5678	VBF M10 STUD M10x120, NUTS, WASHERS	M10	22	60	90	120

universal and frame fixings

Examples of applications



ATTENTION: An appropriate safety factor ≥ 4 should be applied on these values

VBF

Determination of the mean tensile strength of the tilting anchor on a metal profile

1 daN \approx 1 kg

Wing toggle M10 VBF

1500 daN

The type of support has an influence on the strength of the steel anchor. The values show in the table refer to the maximum resistance of the product; it is advisable to adopt an appropriate security coefficient.

Revision 07-2020