

# Vorpa U-BOLT

Heavy duty pipe clamp according to the regulation 2002/95/CE (RoHS)

products group



- U-BOLT**  
 \* **U-BOLT INOX A2**  
 Special U-shaped threaded screw with ISO metric thread

- To fix**
- clamping circular section elements of various sizes

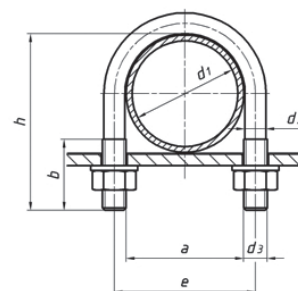
**Accessories**

- N° 2 hexagonal nuts UNI 5588 class 8.
- N° 2 plain washers UNI 6592 class 100HV



product code and technical data

| Code zincplated | Code A2 SS* | Description | h mm | b mm | e mm | a mm | d <sub>1</sub> mm | d <sub>2</sub> mm | d <sub>3</sub> mm |     |
|-----------------|-------------|-------------|------|------|------|------|-------------------|-------------------|-------------------|-----|
| 5200            | 55800       | U-BOLT      | 18   | 37   | 19   | 24   | 18                | 3/8"              | 5,3               | M6  |
| 5201            | 55202       | U-BOLT      | 22   | 43   | 25   | 28   | 22                | 1/2"              | 5,3               | M6  |
| 5202            | 55203       | U-BOLT      | 27   | 47   | 25   | 33   | 27                | 3/4"              | 5,3               | M6  |
| 5203            | 55209       | U-BOLT      | 34   | 55   | 25   | 40   | 34                | 1"                | 5,3               | M6  |
| 5204            | 55801       | U-BOLT      | 43   | 63   | 25   | 49   | 43                | 1 1/4"            | 5,3               | M6  |
| 5205            | 5233        | U-BOLT      | 49   | 73   | 30   | 57   | 49                | 1 1/2"            | 7,1               | M8  |
| 5206            | 5223        | U-BOLT      | 61   | 85   | 30   | 69   | 61                | 2"                | 7,1               | M8  |
| 5207            | 55206       | U-BOLT      | 77   | 101  | 30   | 85   | 77                | 2 1/2"            | 7,1               | M8  |
| 5208            | 55204       | U-BOLT      | 89   | 113  | 30   | 97   | 89                | 3"                | 7,1               | M8  |
| 5209            | 55802       | U-BOLT      | 102  | 130  | 35   | 110  | 102               | 3 1/2"            | 7,1               | M8  |
| 5210            | 55207       | U-BOLT      | 115  | 142  | 35   | 123  | 115               | 4"                | 7,1               | M8  |
| 5211            | 55803       | U-BOLT      | 140  | 169  | 35   | 148  | 140               | 5"                | 7,1               | M8  |
| 5212            | 55211       | U-BOLT      | 168  | 202  | 45   | 178  | 168               | 6"                | 8,9               | M10 |
| 5213            | 55804       | U-BOLT      | 220  | 254  | 45   | 230  | 220               | 8"                | 8,9               | M10 |



- h = pipe clamp height
- b = metric thread
- a = pipe clamp width
- e = distance
- d<sub>1</sub> = for pipe
- d<sub>2</sub> = diameter
- d<sub>3</sub> = thread

Examples of applications

