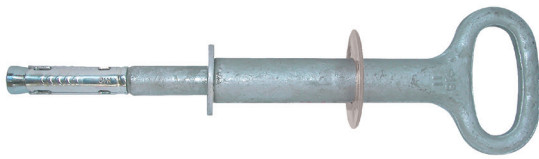




Vorpa TOP VT L

Steel anchor for ropes and chains

products group



- Suitable for**
- concrete
 - natural stone
 - solid brick

- To fix**
- ropes
 - chains

Tensioning ropes and chains

Ideal for applications on solid brick coated by heat insulating panels and rigid insulation materials

product information

Characteristics

- extralong torque controlled expansion anchor made of galvanized steel composed of anti-rotation cold formed body, expansion conical nut, oval eyebolt and PVC washer for tensioning ropes and chains on solid brick coated by heat insulating panels and rigid insulation materials
- the eyebolt can be used several times thanks to the anchor spare part
- anti-rotation during the installation procedure
- three-part expansion sleeve allows even load distribution and small edge and axial spacing

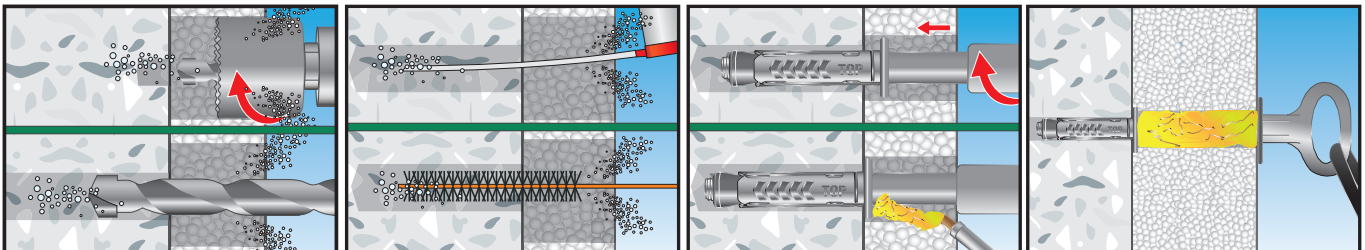
Installation

- to be mounted aligned the wall

Suggestion for use

- make sure the scaffold and eyebolt are well positioned each other
- apply a proper safety factor according to the each situation
- always check load bearing capacity values in the table
- respect the installation data
- **clean the hole before the installation**

installation sequence



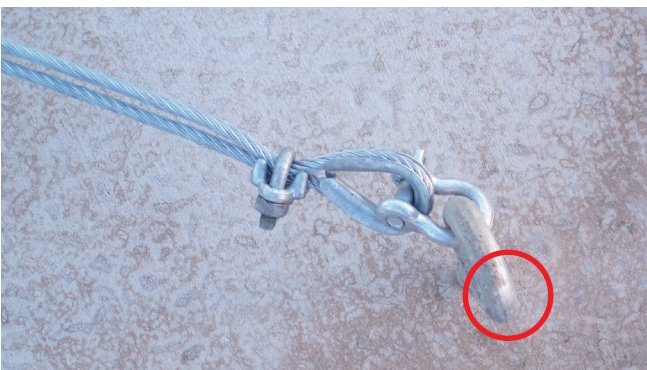
Drill the insulation panels with a cup with a centering tip. Drill the masonry with a Ø18 drill bit.

Clean the hole by using proper cleaning brushes and pump

Insert the anchor in the hole. Screw the eye-bolt applying the correct torque. Fill the hole in the insulation panel with expansion foam

Set the washer aligned to the wall. Installation completed

Examples of applications

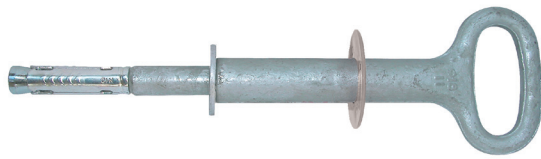


Vorpa TOP VT L

Steel anchor for ropes and chains



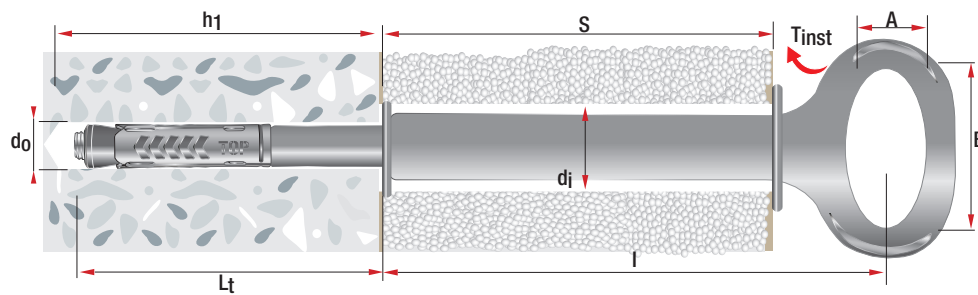
product code and technical data



TOP VT L with steel anchor and PVC washer

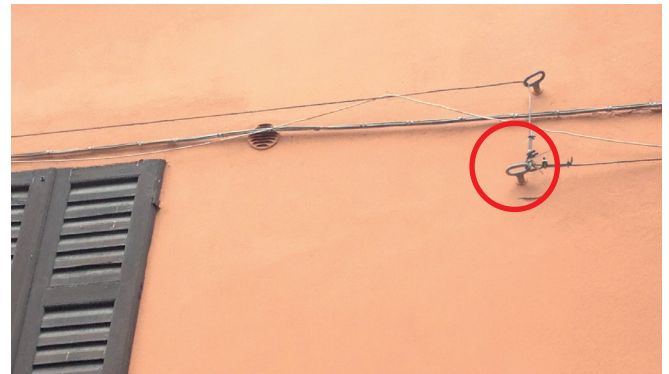
Ideal for applications on solid brick coated by heat insulating panels and rigid insulation materials

Code	Description	d _i panel mm	d _o wall mm	L _t mm	S max panel thickness mm	h ₁ mm	T _{inst} mm	A x B mm	l mm
3302	TOP VT L Ø18/130-140	46	18	130	140	140	65	33 x 70	180
3305	TOP VT L Ø18/130-200	46	18	130	200	140	65	33 x 70	240



- d_i = Hole diameter in the panel
- d_o = Hole diameter
- L_t = Anchor length
- h₁ = Min. hole depth
- l = Axial spacing
- S = Panel thickness
- T_{inst} = Torque

Examples of applications



TOP VT L

Pull-out values in daN for applications on concrete C20/25

1 daN_1 kg

4.500

Bending moment for applications on concrete C20/25

300 kg bending = permanent arrow 1 mm

550 kg bending = permanent arrow 30 mm

ATTENTION: An appropriate safety factor ≥ 3 should be applied on these values

- As for applications on natural stones and solid bricks it is not possible to show specific loading values because of the various materials properties
- It is suggested to always make pull out tests before using the anchors