

Vorpa TOP T Ø50

Steel anchor for scaffolds standing on the ground



concrete natural stone solid brick

products group



- Suitable for**
- concrete
 - natural stone
 - solid brick

- To fix**
- scaffolding standing on the ground



Test report available

product information

Characteristics

- torque controlled expansion anchor made of galvanized steel composed of anti-rotation cold formed body, expansion conical nut and eyebolt Ø50mm
- the eyebolt can be used several times thanks to the anchor spare part
- the cap hole covering enables to cover off holes at the end of the work in a quick and simple way
- eyebolt neck with flat slot to tight by wrench
- anti-rotation during the installation procedure
- three-part expansion sleeve allows even load distribution and small edge and axial spacing

Installation

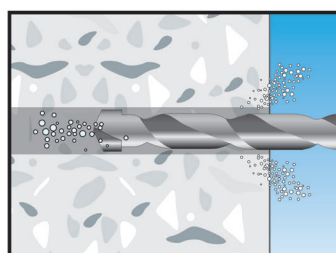
- to be mounted aligned the wall

Suggestion for use

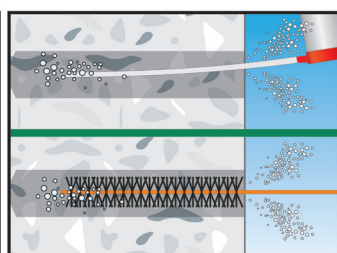
- make sure the scaffold and eyebolt are well positioned each other
- apply a proper safety factor according to the each situation
- always check load bearing capacity values in the table
- respect the installation data
- **clean the hole before the installation**

installation sequence

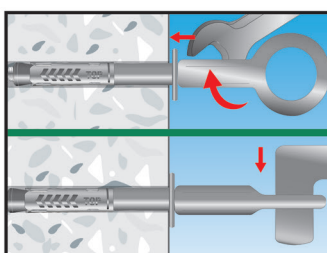
1) installation procedure



Drill the masonry.

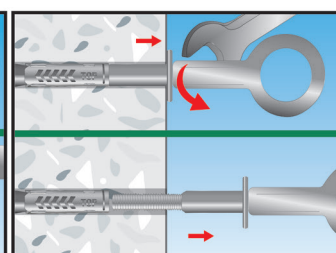


Clean the hole by using proper cleaning brushes and pump



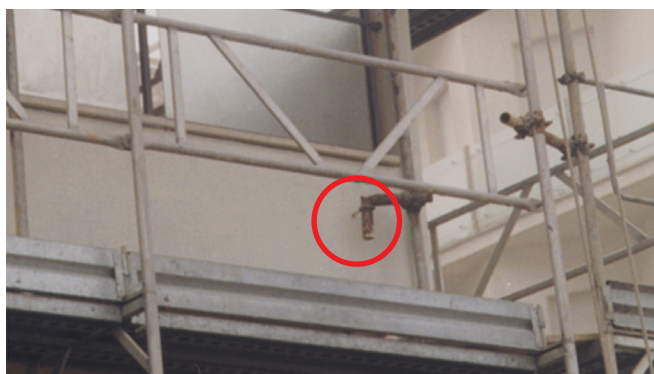
Screw the eyebolt applying the correct torque and set the washer aligned to the wall

2) to re-use the eyebolt



Unscrew the eyebolt and pull it out. Close the hole with the proper cap.

Examples of applications



Vorpa TOP T Ø50

Steel anchor for scaffolds standing on the ground

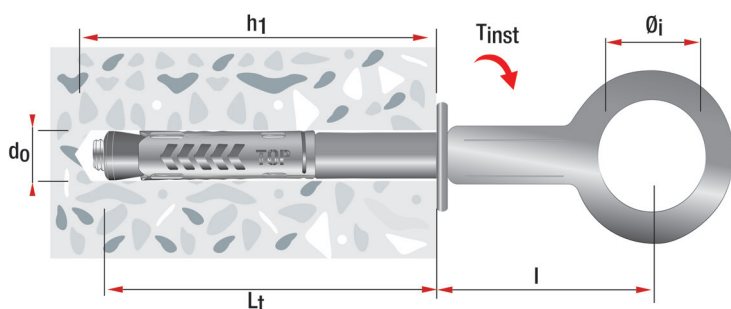


product code and technical data



TOP T
eyebolt Ø50

Code	Description	d ₀ mm	L _t mm	h ₁ mm	T _{inst} mm	Ø _i mm	l mm	ch mm
837	TOP T Ø18/130	18	130	140	65	50	100	22
838	TOP T Ø18/180	18	180	190	65	50	100	22



- d₀ = Hole diameter
- L_t = Anchor length
- h₁ = Min. hole depth
- T_{inst} = Torque
- Ø_i = Internal eyebolt diameter
- l = Axial spacing
- ch = Spanner

Accessories



code 713



code 91294



code 1896

Code	Description	d ₀ mm	Length mm	Sizes mm	C mm
713	TOP 12 - Ø18	18	75		
91294	Washer Ø18			18x45x3	
1896	CFP cup hole covering	18	30		22



Example of applications

TOP T

Pull-out values in daN for applications on concrete C20/25

1 daN ≈ 1 kg

4.500

ATTENTION: An appropriate safety factor ≥ 3 should be applied on these values

- As for applications on natural stones and solid bricks it is not possible to show specific loading values because of the various materials properties
- It is suggested to always make pull out tests before using the anchors
- For any particular need please contact Vorpa technical department