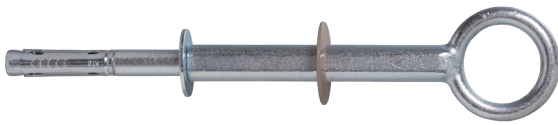




Vorpa TOP L Ø50

Steel anchor for scaffolds standing on the ground

products group



Suitable for

- concrete
- natural stone
- solid brick

To fix

- scaffolding standing on the ground

Ideal for applications on solid brick coated by heat insulating panels and rigid insulation materials

product information

Characteristics

- extralong torque controlled expansion anchor made of galvanized steel composed of anti-rotation cold formed body, expansion conical nut, eyebolt Ø50mm and PVC red washer
- the eyebolt can be used several times thanks to the anchor spare part
- eyebolt neck with flat slot to tight by wrench
- anti-rotation during the installation procedure
- three-part expansion sleeve allows even load distribution and small edge and axial spacing

Installation

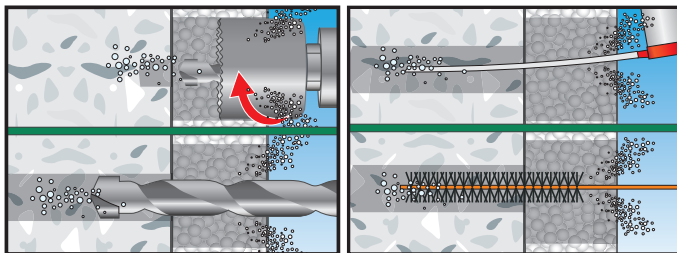
- to be mounted aligned the wall

Suggestion for use

- make sure the scaffold and eyebolt are well positioned each other
- apply a proper safety factor according to the each situation
- always check load bearing capacity values in the table
- respect the installation data
- **clean the hole before the installation**

installation sequence

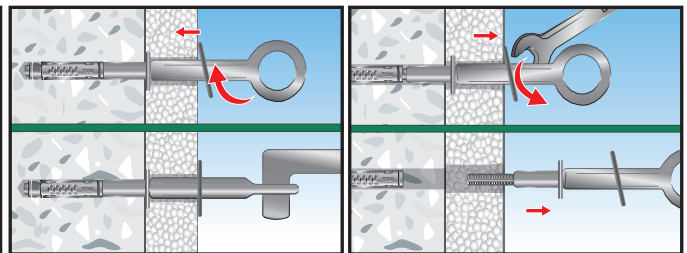
1) installation procedure



Drill the insulation panels with a cup with a centering tip. Drill the masonry with a Ø18 drill bit

Clean the hole by using proper cleaning brushes and pump

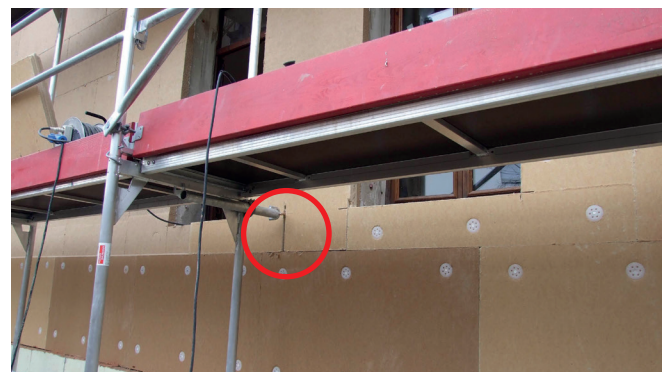
2) to re-use the eyebolt



Insert the anchor in the hole. Screw the eyebolt applying the correct torque and set the washer aligned to the wall

Unscrew the eyebolt and pull it out. Close the hole with the proper cap

Examples of applications

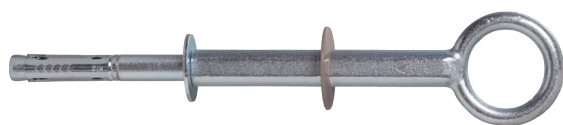


Vorpa TOP L Ø50

Steel anchor for scaffolds standing on the ground

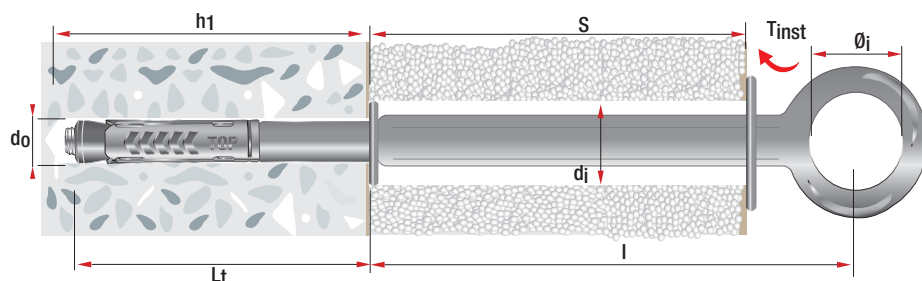


product code and technical data



TOP L Ø50
eyebolt Ø50 and PVC washer

Code	Description	d _i panel mm	d _o wall mm	L _t mm	Max panel thickness mm	h ₁ mm	T _{inst} mm	Ø _i mm	l mm	ch mm
59837	TOP L TC Ø18/130-140	46	18	130	140	140	65	50	205	22
59839	TOP L TC Ø18/130-205	46	18	130	205	140	65	50	270	22
59838	TOP L TL Ø18/180-140	46	18	180	140	190	65	50	205	22
59840	TOP L TL Ø18/180-205	46	18	180	205	190	65	50	270	22



- d_i = Hole diameter in the panel
- d_o = Hole diameter
- L_t = Anchor length
- h₁ = Min. hole depth
- T_{inst} = Torque
- Ø_i = Internal eyebolt diameter
- l = Axial spacing
- S = Panel thickness
- ch = Spanner

Accessories



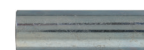
code 713



code 91294



code 2870



code 91057
to be used with 59838/59840

Code	Description	d _o mm	Length mm	Sizes mm
713	TOP 12 - Ø18	18	75	18x75
91294	Washer Ø18			18x45x3
2870	PVC washer Ø55			22x55x3
91057	Spacer Ø18			18x54x1,5

TOP L

Pull-out values in daN for applications on concrete C20/25

1 daN = 1 kg

4.500

ATTENTION: An appropriate safety factor ≥ 3 should be applied on these values

- As for applications on natural stones and solid bricks it is not possible to show specific loading values because of the various materials properties
- It is suggested to always make pull out tests before using the anchors
- For any particular need please contact Vorpa technical department