

Vorpa STEEL BUCKLE

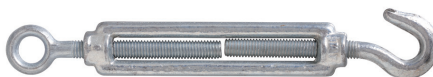
Fixing accessories

product code and technical data

heavy duty anchors



Eye and eye turn buckle



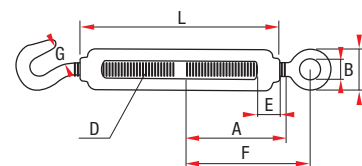
Hook and eye buckle

To fix

- wire ropes
- cables
- rods
- radio systems cables
- TV systems cables
- tie rods for orchards
- wire clotheslines
- tensioning cables

Hook and eye buckle

| Code | D mm | A mm | B mm | C mm | E mm | F mm | G mm | L mm | Max load kg | Coeff. |
|------|---------|---------|---------|---------|---------|---------|---------|---------|----------------|--------|
| 1260 | M5 | 35 | 8 | 16 | 9 | 49 | 7 | 80 | 25 | 4 |
| 1261 | M6 | 44 | 11 | 19 | 10 | 59,5 | 8 | 90 | 45 | 4 |
| 1262 | M8 | 52 | 11 | 22 | 13 | 71 | 10 | 110 | 75 | 4 |
| 1263 | M10 | 62 | 14 | 28 | 14 | 90 | 12 | 125 | 115 | 4 |
| * | M11 | 68 | 15 | 33 | 18 | 90 | 15 | 120 | 140 | 4 |
| 1264 | M12 | 70 | 16 | 33 | 18 | 91,5 | 15 | 140 | 150 | 4 |
| * | M14 | 85 | 18 | 36 | 20 | 113 | 17 | 170 | 210 | 4 |
| * | M16 | 90 | 23,5 | 48 | 22 | 132 | 19 | 190 | 340 | 4 |
| * | M18 | 98 | 25 | 51 | 27 | 135,5 | 20 | 200 | 450 | 4 |
| * | M20 | 105 | 26 | 57 | 27 | 156,5 | 20 | 220 | 650 | 4 |
| * | M22 | 118 | 28 | 60 | 28 | 160 | 23 | 240 | 900 | 4 |
| * | M24 | 130 | 28 | 65 | 30 | 179,5 | 25 | 260 | 1200 | 4 |
| * | M27 | 135 | 31 | 71 | 49 | 188,5 | 31 | 300 | 1400 | 4 |
| * | M30 | 135 | 31 | 71 | 56 | 188,5 | 31 | 310 | 1500 | 4 |
| * | M33 | 148 | 36 | 88 | 56 | 201 | 34 | 310 | 1750 | 4 |
| * | M36 | 158 | 42 | 94 | 55 | 230 | 44 | 295 | 2000 | 4 |
| * | M39 | 170 | 49 | 104 | 58 | 238 | 44 | 330 | 2250 | 4 |



Coeff. = Safety factor to be applied

* on request

Eye and eye turn buckle

| Code | D mm | A mm | B mm | C mm | E mm | F mm | L mm | Max load kg | Coeff. |
|------|---------|---------|---------|---------|---------|---------|---------|----------------|--------|
| 1250 | M5 | 35 | 8 | 16 | 9 | 49 | 80 | 100 | 4 |
| 1251 | M6 | 44 | 11 | 19 | 10 | 59,5 | 90 | 150 | 4 |
| 1252 | M8 | 52 | 11 | 22 | 13 | 71 | 110 | 300 | 4 |
| 1253 | M10 | 62 | 14 | 28 | 14 | 90 | 125 | 470 | 4 |
| * | M11 | 68 | 15 | 33 | 18 | 90 | 120 | 580 | 4 |
| 1254 | M12 | 70 | 16 | 33 | 18 | 91,5 | 140 | 650 | 4 |
| * | M14 | 85 | 18 | 36 | 20 | 113 | 170 | 800 | 4 |
| * | M16 | 90 | 23,5 | 48 | 22 | 132 | 190 | 1250 | 4 |
| * | M18 | 98 | 25 | 51 | 27 | 135,5 | 200 | 1500 | 4 |
| * | M20 | 105 | 26 | 57 | 27 | 156,5 | 220 | 1800 | 4 |
| * | M22 | 118 | 28 | 60 | 28 | 160 | 240 | 2250 | 4 |
| * | M24 | 130 | 28 | 65 | 30 | 179,5 | 260 | 2800 | 4 |
| * | M27 | 135 | 31 | 71 | 49 | 188,5 | 300 | 3500 | 4 |
| * | M30 | 135 | 31 | 71 | 56 | 188,5 | 310 | 4000 | 4 |
| * | M33 | 148 | 36 | 88 | 56 | 201 | 310 | 4500 | 4 |
| * | M36 | 158 | 38 | 94 | 55 | 230 | 295 | 5000 | 4 |
| * | M39 | 170 | 42 | 104 | 58 | 238 | 330 | 6000 | 4 |
| * | M42 | 170 | 50 | 110 | 66 | 245 | 340 | 7000 | 4 |
| * | M45 | 170 | 50 | 110 | 66 | 245 | 340 | 8000 | 4 |

