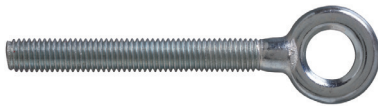


# Vorpa ACCESSORIES

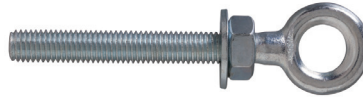
Fixing accessories

product code and technical data

- ideal for various applications
- available also with nut and washer
- suitable for each applications with chemical anchors and mechanical anchors
- DO NOT use the clamps in situations contrary to national safety or accident laws
- DO NOT use the clamps in equipment intended for the transport or lifting of persons or animals
- DO NOT exceed the loads indicated in the table
- DO NOT ignore the instructions for use regarding the correct selection



Pressed threaded eye



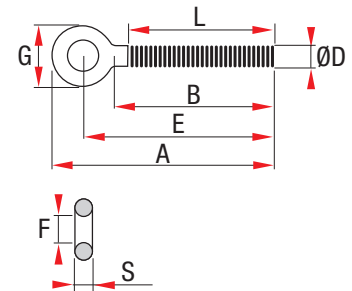
Pressed threaded eye with nut and washer



\* A2 stainless steel pressed threaded eye

Pressed threaded eye

Code	ØDxB thread x length	L thread	A length	E	G Ø min/max	F Ø min/max	S thickness min/max	Max load kg
* 994	M5x45	40	60.7	52.7	15.3/16.7	8.05/8.55	3.20/3.80	480
	M5x50	48	65.7	57.7	15.3/16.7	8.05/8.55	3.20/3.80	
* 995	M6x45	40	64.6	54.6	18.3/19.7	9.75/10.25	3.90/4.50	696
	M6x55	50	74.6	64.6	18.3/19.7	9.75/10.25	3.90/4.50	
* 996	M8x57	52	78.6	67.4	21.8/23.2	10.75/11.25	4.90/5.50	1360
	M8x65	60	86.7	75.4	21.8/23.2	11.55/12.05	4.90/5.50	
* 997	M10x68	60	94.1	80.6	26.0/28.0	14.25/14.75	6.15/6.85	2020
	M10x81	73	107.1	93.6	26.0/28.0	14.25/14.75	6.15/6.85	
* 998	M10x101	93	127.1	113.6	26.0/28.0	14.25/14.75	6.15/6.85	2966
	M12x74	66	106.3	89.5	32.5/34.5	16.75/17.25	8.15/8.85	
* 999	M12x98	90	130.3	113.5	32.5/34.5	16.75/17.25	8.15/8.85	4290
	M14x93	85	127.1	109.4	34.5/36.5	17.75/18.25	8.30/9.10	
	M16x100	95	145.3	122.1	44.8/47.2	22.70/23.30	12.10/12.90	5680



Recommended safety factor not less than 3

\* on request

A2 stainless steel pressed threaded eye



Code	ØDxB thread x length	L thread	A length	E	G Ø min/max	F Ø min/max	S thickness min/max	Max load kg
995i	M6x55.5	50	75.0	65.0	19.2/20.8	9.7/10.3	5.2/5.8	2100
* 996i	M6x60.5	55	80.0	70.0	19.2/20.8	9.7/10.3	5.2/5.8	
* 997i	M6x65.5	60	85.0	75.0	19.2/20.8	9.7/10.3	5.2/5.8	2915
	M8x61.5	55	83.0	72.0	21.2/22.8	10.7/11.3	6.0/6.6	
* 998i	M8x66.5	60	88.0	77.0	21.2/22.8	10.7/11.3	6.0/6.6	4540
	M8x71.5	65	93.0	82.0	21.2/22.8	10.7/11.3	6.0/6.6	
* 999i	M10x67.0	60	97.0	81.5	30.0/32.0	13.6/14.4	8.2/9.0	7020
	M10x80.0	73	111.0	94.5	30.0/32.0	13.6/14.4	8.2/9.0	
* 999i	M12x73.5	66	107.0	89.5	34.0/36.0	15.6/16.4	8.6/9.4	7020
	M12x97.5	90	131.0	113.5	34.0/36.0	15.6/16.4	8.6/9.4	

Recommended safety factor not less than 3

\* on request