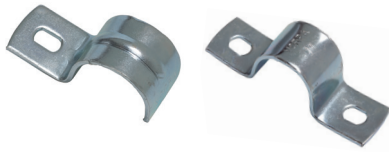


Vorpa CLIPS

Clips for rigid conduits

products group

HEAVY CLIPS

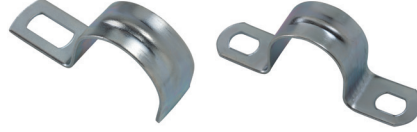


SFT 1 zincplated
SFZ - hotdipped galvanized heavy clip with single hole

SFT 2 zincplated heavy clip with double hole

- rigid conduits / cable
- tubes for installations
- SPS clips suitable for road-signs

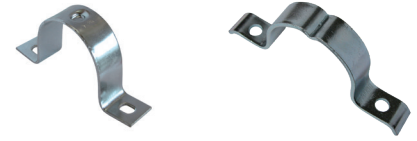
LIGHT CLIPS



SL 1 zincplated light clip with single hole

SL 2 zincplated light clip with double hole

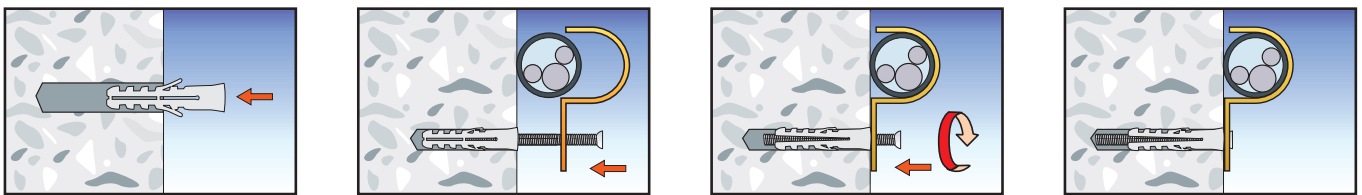
ANTIROTATION PROTUBERANCE CLIPS



SPS2 zincplated heavy clip with antirotation protuberance with double hole

SPS 3 zincplated heavy clip with antirotation protuberance with double hole

installation sequence



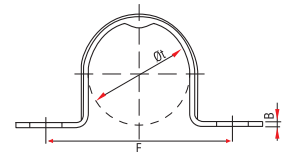
Clean the hole before the installation

product code and technical data

HEAVY CLIP WITH ANTIROTATION PROTUBERANCE

SPS2 zincplated heavy clip with antirotation protuberance with double hole **2 HOLES - HEAVY CLIP**

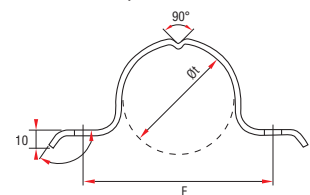
Code	Description	A mm	B mm	C mm	E mm	F mm	Ø _t mm
357S	SPS2 60	25	2,2	Ø 8,5	11	100	Ø 60



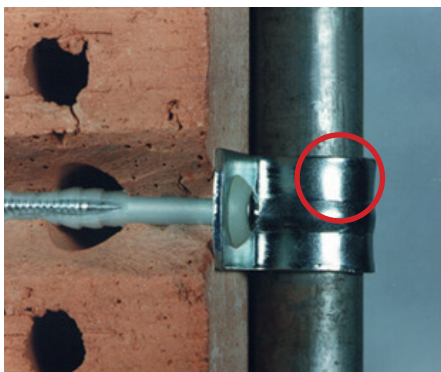
- A = Width
- B = Thickness
- CxE = Hole dimension
- F = Distance
- Ø_t = Pipes

SPS3 zincplated heavy clip with antirotation protuberance with double hole **2 HOLES - HEAVY CLIP**

Code	Description	A mm	B mm	C mm	F mm	Ø _t mm
360	SPS3 60	20	3,0	Ø9	102	Ø 60



Examples of applications



Vorpa CLIPS

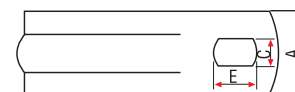
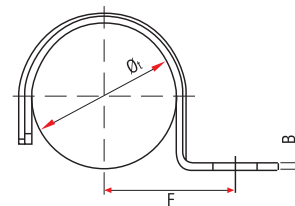
Clips for rigid conduits

product code and technical data

SFT 1 zincplated heavy clip with single hole - ideal for plumbing

1 HOLE - HEAVY CLIP

Code	Description	A mm	B mm	C mm	E mm	F mm	Øt mm
338	SFT1 1 foro 10	14	1,2	5	8	18	10
339	SFT1 1 foro 12	16	1,2	5	8	20	12
340	SFT1 1 foro 14	18	1,5	5	8	20	14
341	SFT1 1 foro 3/8"	20	1,8	6	10	25	3/8"
342	SFT1 1 foro 1/2"	22	1,8	6	10	28	1/2"
343	SFT1 1 foro 3/4"	23	2,0	6	10	30	3/4"
344	SFT1 1 foro 1"	24	2,0	8,5	11	35	1"
345	SFT1 1 foro 1 1/4"	24	2,2	8,5	11	40	1 1/4"
346	SFT1 1 foro 1 1/2"	25	2,2	8,5	11	45	1 1/2"
347	SFT1 1 foro 2"	25	2,2	8,5	11	50	2"



A = Width
 B = Thickness
 CxE = Hole dimension
 F = Distance
 Øt = Pipes

SFZ hotdipped galvanized heavy clip with single hole - ideal for light poles and telephone poles

1 HOLE - HEAVY CLIP

341ZC	SFZ 1 foro 3/8"	20	1,8	6	10	25	3/8"
342ZC	SFZ 1 foro 1/2"	22	1,8	6	10	28	1/2"
343ZC	SFZ 1 foro 3/4"	23	2,0	6	10	30	3/4"
344ZC	SFZ 1 foro 1"	24	2,0	8	11	35	1"
345ZC	SFZ 1 foro 1 1/4"	24	2,2	8	11	40	1 1/4"
346ZC	SFZ 1 foro 1 1/2"	25	2,2	8	11	45	1 1/2"
347ZC	SFZ 1 foro 2"	25	2,2	8	11	50	2"

SL 1 zincplated light clip with single hole - ideal for electrical rigid conduits

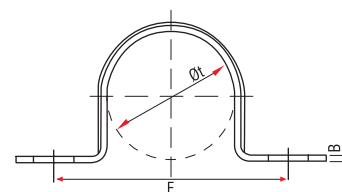
1 HOLE - LIGHT CLIP

3338	SL1 1 foro 7	10	0,9	4,5	6,5	14	7-8
3339	SL1 1 foro 10	14	1,2	6,5	12,5	17	10-11
3340	SL1 1 foro 12	14	1,2	6,5	12,5	18	12-13
3341	SL1 1 foro 16	14	1,2	6,5	12,5	20	16-17
3342	SL1 1 foro 20	14	1,2	6,5	12,5	22	19-20
3343	SL1 1 foro 22	14	1,2	6,5	12,5	24	21-22
3344	SL1 1 foro 26	14	1,2	6,5	12,5	26	25-26
3345	SL1 1 foro 28	14	1,2	6,5	12,5	28	28-30
3346	SL1 1 foro 32	15	1,8	6,5	12,5	33	31-32
3347	SL1 1 foro 38	15	1,8	6,5	12,5	46	38-40
3348	SL1 1 foro 50	15	1,8	6,5	12,5	53	50

SFT 2 zincplated heavy clip with double hole - ideal for plumbing

2 HOLES - HEAVY CLIP

351	SFT2 2 fori 3/8"	15	1,5	6	10	50	3/8"
352	SFT2 2 fori 1 1/2"	22	2,0	8	10	56	1/2"
353	SFT2 2 fori 3/4"	23	2,0	8	10	60	3/4"
354	SFT2 2 fori 1"	23	2,2	8	10	70	1"
355	SFT2 2 fori 1 1/4"	24	2,2	8,5	11	80	1 1/4"
356	SFT2 2 fori 1 1/2"	24	2,2	8,5	11	90	1 1/2"
357	SFT2 2 fori 2"	25	2,2	8,5	11	100	2"
358	SFT2 2 fori 2 1/2"	30	2,2	Ø10	Ø10	130	2 1/2"



A = Width
 B = Thickness
 CxE = Hole dimension
 F = Distance
 Øt = Pipes

SL 2 zincplated light clip with double hole - ideal for electrical rigid conduits

2 HOLES - LIGHT CLIP

3352	SL2 2 fori 10	10	0,9	5	Ø5	31	10
3353	SL2 2 fori 13	10	0,9	5	Ø5	32	13
3354	SL2 2 fori 16	12	0,9	5	6,5	34	16
3355	SL2 2 fori 19	12	0,9	5	6,5	38	19
3356	SL2 2 fori 22	14	0,9	6,5	8,5	41	22
3357	SL2 2 fori 26	14	0,9	6,5	8,5	47	26
3358	SL2 2 fori 28	14	0,9	6,5	8,5	50	28
3359	SL2 2 fori 32	14	0,9	6,5	10	54	32
3360	SL2 2 fori 38	14	0,9	6,5	10	61	38
3361	SL2 2 fori 50	14	0,9	6,5	10	80	50