

Vorpa FOAM FOR ROOFING

Self-expanding polyurethane foam

products group and information



FOAM FOR ROOFING
GUN TYPE



To fix:

- pipes insulation
- roofing tiles fixings
- fillings and finishing touches
- fixing of Insulating panels
- windows and doors frames
- chimney flues insulation

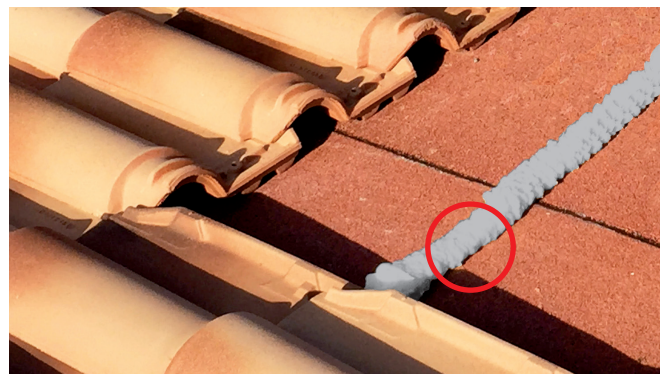
Characteristics

- self-expanding one component polyurethane foam available in gun types
- state: liquefied gas in pressure content
- it expands and hardens with air humidity
- suitable for repairing of roofing
- high adhesion to most of the building materials
- volume variation 0%
- foam yield (extruded) >40%
- high filling capacity, up to 10 m²
- flammable Class B3
- after setting it can be treated mechanically
- chemical agents, moulds and micro-organisms resistant
- polymerize at low temperatures

Suggestion for use

- shake before using. The surface of application must be well cleaned. Remove dust, oil and grease. Surfaces must be moistened with water. Apply upward. In presence of wide hollow materials it is suggested to repeat the application after setting. The application can be interrupted in any moment, leave the bottle turned on the gun till completely empty. Avoid any contact with sources of ignition, heat, flames

Examples of applications



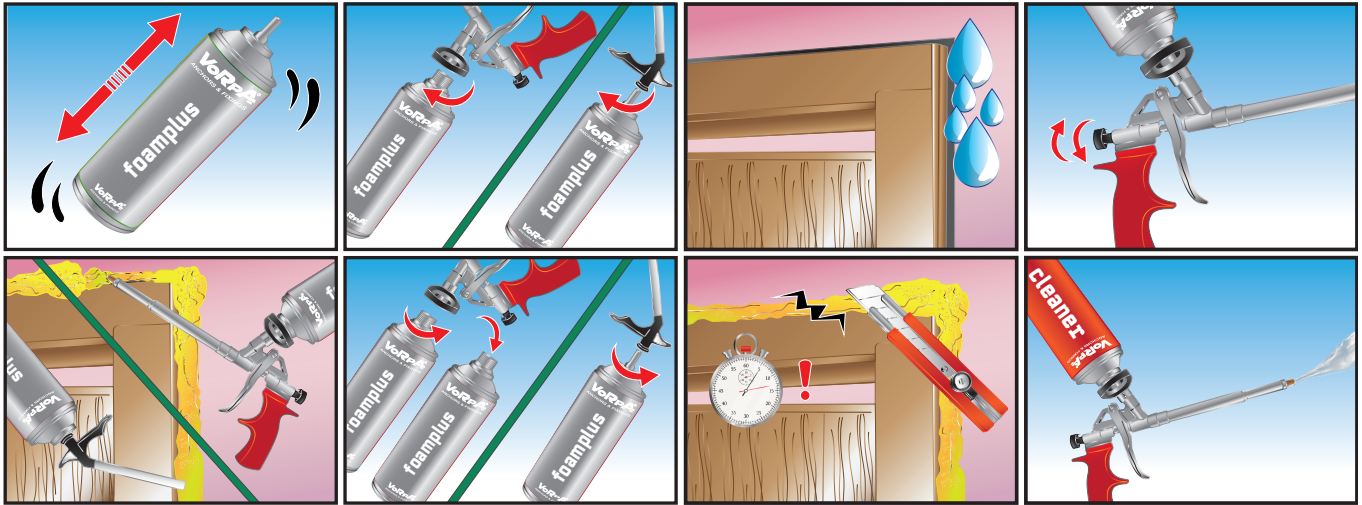
chemical anchors

Vorpa FOAM FOR ROOFING

Self-expanding polyurethane foam

installation sequence

Stability load bearing 18 hours

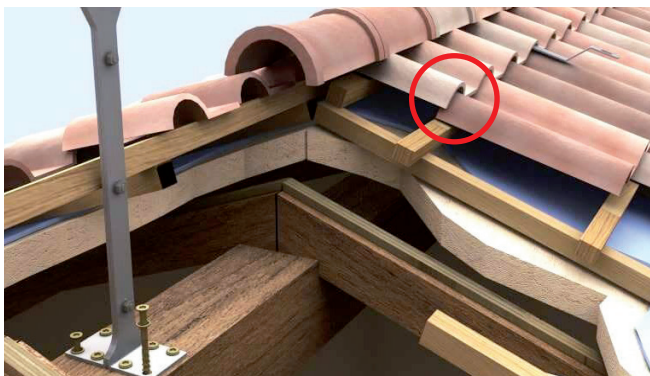


Clean the surfaces before the installation

product code and temperatures

Code	Description	Content ml	Colour	Skin formation time min.	Can be cut min.	Temperature resistance C°	Application temperature C°	Shelf life
3604	FOAM ROOFING GUN TYPE	750	grey	12-16 min	30-40 min	-50°C ÷ +90°C	+5°C ÷ +20°C	15 months

Examples of applications



FOAMPLUS FOR ROOFING

Performance data

Specific weight (extruded)	25-30 kg/m ³	Pressure strength	3 N/cm ²
Dimensional stability	none	Thermal conductivity	0,034 W/(mK)
Tensile strength	10 N/cm ²	Flash point	400°C