

chemical anchors

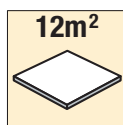
Vorpa **FOAM GRIP EPS**

Self-expanding polyurethane foam for EPS panels

products group and information



GRIP FOAM FOR PANELS



Output in square



SELF-EXTINGUISHING



ENERGY SAVING



2 Hours

To fix:

- external panels
- roofing tiles fixings
- thermal and sound insulation panels

Characteristics

- gun adhesive sticks to all common construction materials for filling and fixing gaps in exterior insulation finishing
- the high output and powerful initial bond strength enable rapid, efficient panel mounting
- the product is ready to use and requires no additional support structures
- EIFS gun adhesive is used in place of mortar mixes
- particularly suitable for bonding insulating panels, adheres on most of the building materials (PS, PU, bituminous). Does not adhere on PP, PE, TEFLON and silicones
- protect from direct sunlight exposure. Overpaintable
- installation yield: 12 sqm
- it is not subject to ageing, but is susceptible to UV radiation damage.
- excellent thermal and sound insulation properties
- simple time-saving application
- powerful initial bonding
- low storage space requirement
- clean application
- flammable Class B2 according to DIN 4102

Suggestion for use

- shake well before use. Apply first on the edges of panels, then zig-zag spray on clean, dust- and greasefree surfaces using the specific gun, keeping the can upside down. (moistening surfaces improves adhesion, curing and structure). Wait about 2 minutes before install and align panels within 15 minutes. Delete possible big surfaces irregularity by applying mortar before placing panels. In case of rain or wind, protect panels as it takes 2 hours for the adhesive to reach the appropriate mechanical properties. In case of further applications (over 24 hours after) immediately clean the erogation valve (and the gun) by using Foam Dissolver

**+5°C/+25°C** Store upright

Adhesive application on panels



Examples of applications



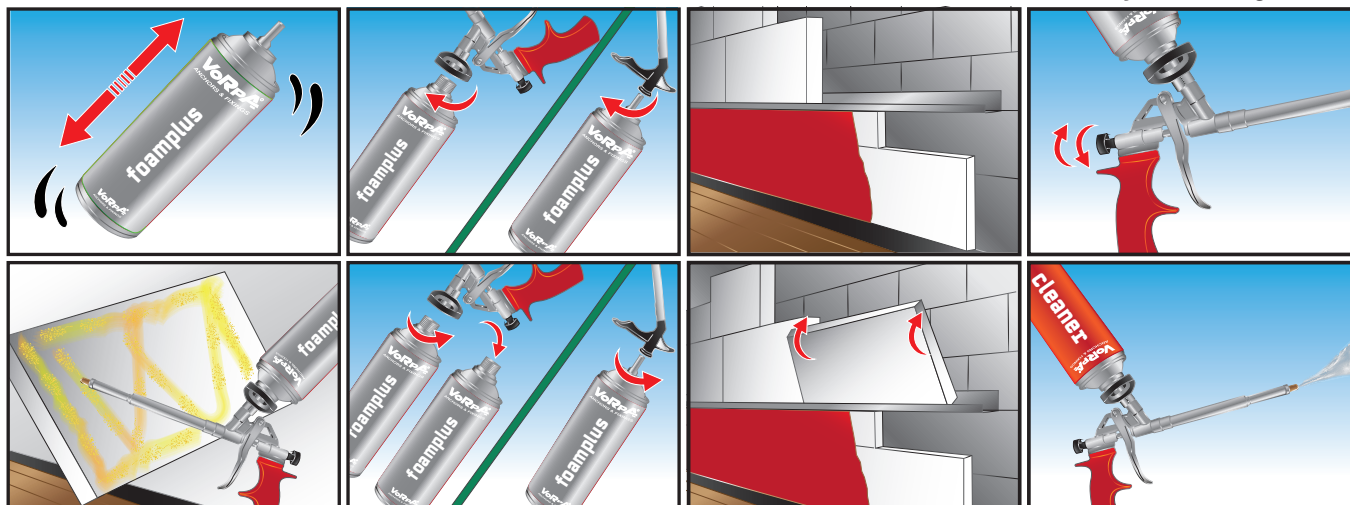
chemical anchors

Vorpa **FOAM GRIP EPS**

Self-expanding polyurethane foam for EPS panels

installation sequence

Stability load bearing 11 hours



Clean the surfaces before the installation

product code and temperatures

Code	Description	Content ml	Colour	Skin formation time min. (23°C-50%H.R)	Can be cut min. (3cm) min.	Temperature resistance C°	Application temperature C°	Shelf life
3802	FOAM GRIP GUN TYPE	750	yellow	12-16 min	40 min	-50°C ÷ +90°C	+5°C ÷ +30°C	12 months

Examples of applications



FOAMPLUS GRIP EPS

Performance data

Specific weight (extruded)	25-30 kg/m3	Tensile strength (BS 5241)	1,1 N/cm2
Dimensional stability	none	Pressure strength (BS 53421)	4 N/cm2
Post expansione	5%1	Thermal conductivity	0,03 W/(mK)