



perforated brick



hollow brick



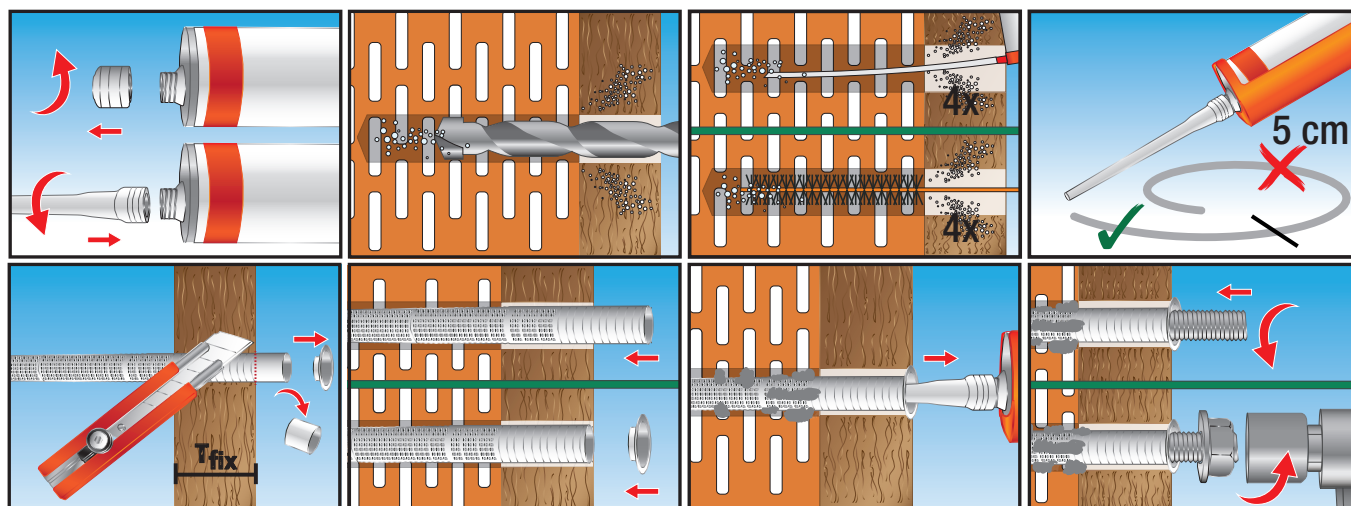
perforated cement

## products group


**CVX mobile**  
 plastic perforated sleeve for hollow materials  
 adjustable in depth

## installation sequence

## Application on hollow materials with plastic perforated sleeve CVX mobile



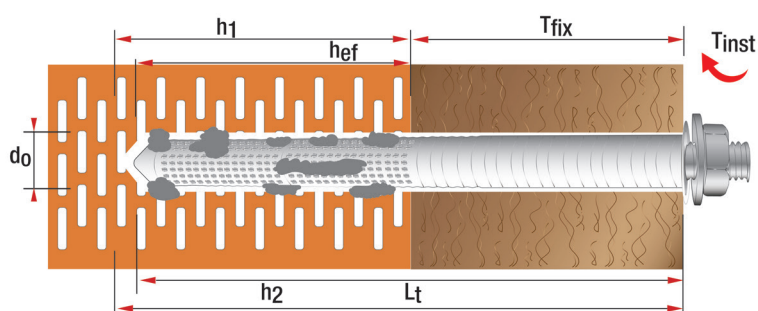
## Performance based on clean holes

## Clean the hole before the installation

## product code and technical data

## Application on hollow materials with perforated sleeve CVX MOBILE

Code	Description	d <sub>0</sub> mm	L <sub>t</sub> mm	h <sub>1</sub> mm	h <sub>2</sub> mm	h <sub>ef</sub> mm	Ø <sub>b</sub> mm	T <sub>fix</sub> min-max mm
51017	CVX 16x 330	18	330	135	340	130	M10-M12	20-200



d<sub>0</sub> = Hole diameter  
 L<sub>t</sub> = Anchor length  
 h<sub>1</sub> = Min. hole depth  
 h<sub>2</sub> = Max hole depth  
 h<sub>ef</sub> = Effective anchorage depth  
 Ø<sub>b</sub> = Stud diameter  
 L<sub>b</sub> = Stud length  
 T<sub>fix</sub> = Fixture thickness

Stud length calculation:  $L_b = L_t + T_{fix}$

## Examples of applications

