



perforated brick

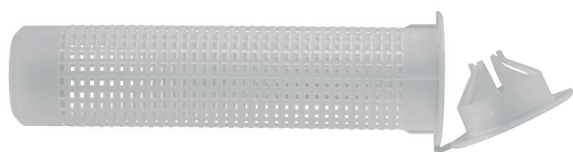


hollow brick



perforated cement

products group


CVX
 plastic perforated sleeve for hollow materials

Examples of application CVX

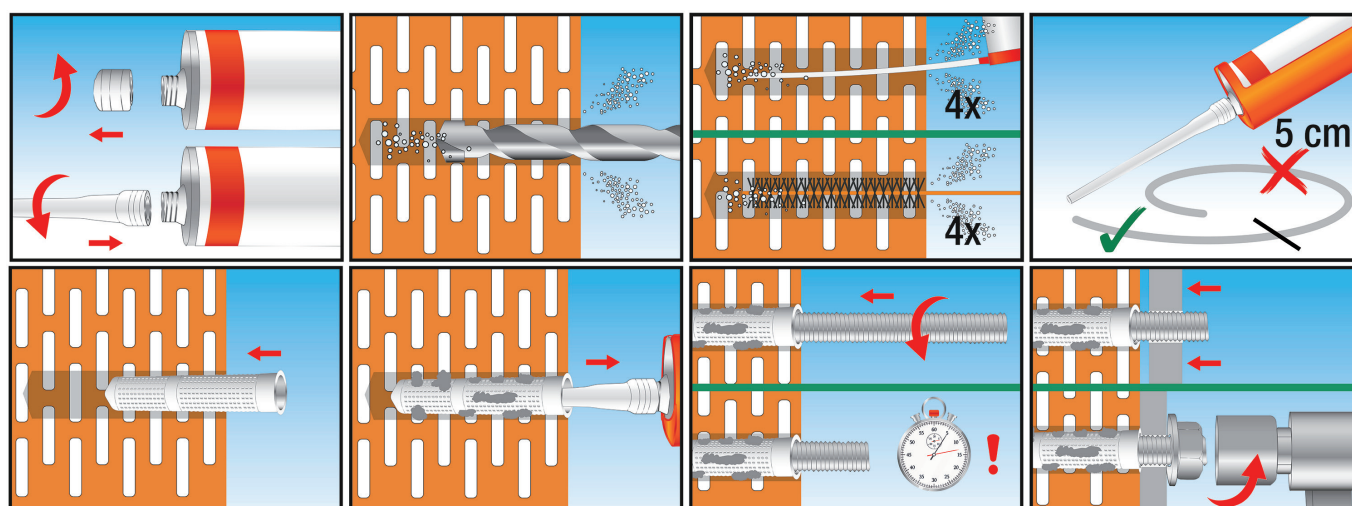

CVX N
 black plastic perforated sleeve to be used with THERMOISO PLUS on hollow materials for insulated walls

Examples of application CVX N



installation sequence

Clean the hole before the installation



Performance based on clean holes

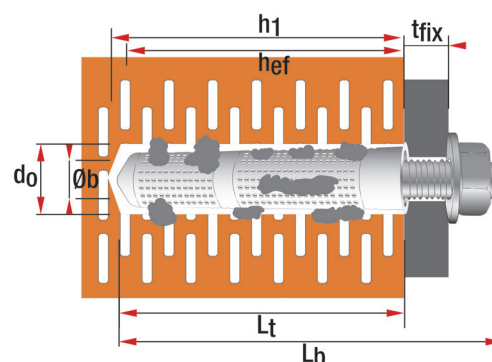
product code and technical data

Application on hollow materials with CVX

Code	Description	d _o mm	L _t mm	h ₁ mm	h _{ef} mm	Ø _b mm
01006	CVX 12x50	12	50	60	50	up to 8
01006E	CVX 12x60	12	60	70	60	up to 8
51006	CVX 12x80	12	80	90	80	up to 8
00913B	CVX 15x85	15	80	90	80	8 - 12
01017B	CVX 15x130	15	130	140	130	8 - 12
00915	CVX 20x85	20	85	95	85	12 - 16

Application on hollow materials with CVX N and THERMOISO PLUS on insulated walls

Code	Description	d _o mm	L _t mm	h ₁ mm	h _{ef} mm	Ø _b mm
58732	CVX N 16x85	16	85	95	85	8 - 12
58731	CVX N 20x100	20	100	110	100	12 - 16



d_o = Hole diameter
 L_t = Anchor length
 h₁ = Min. hole depth
 h_{ef} = Effective anchorage depth
 Ø_b = Stud diameter
 L_b = Stud length
 T_{fix} = Fixture thickness
 d_b = Internal sleeve thread

Stud length calculation: $L_b = L_t + T_{fix}$