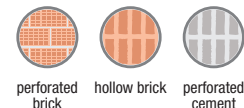
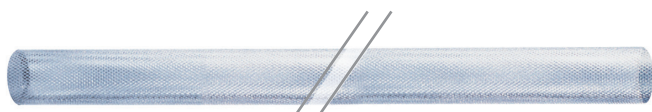


# Vorpa CVK

Steel perforated sleeve



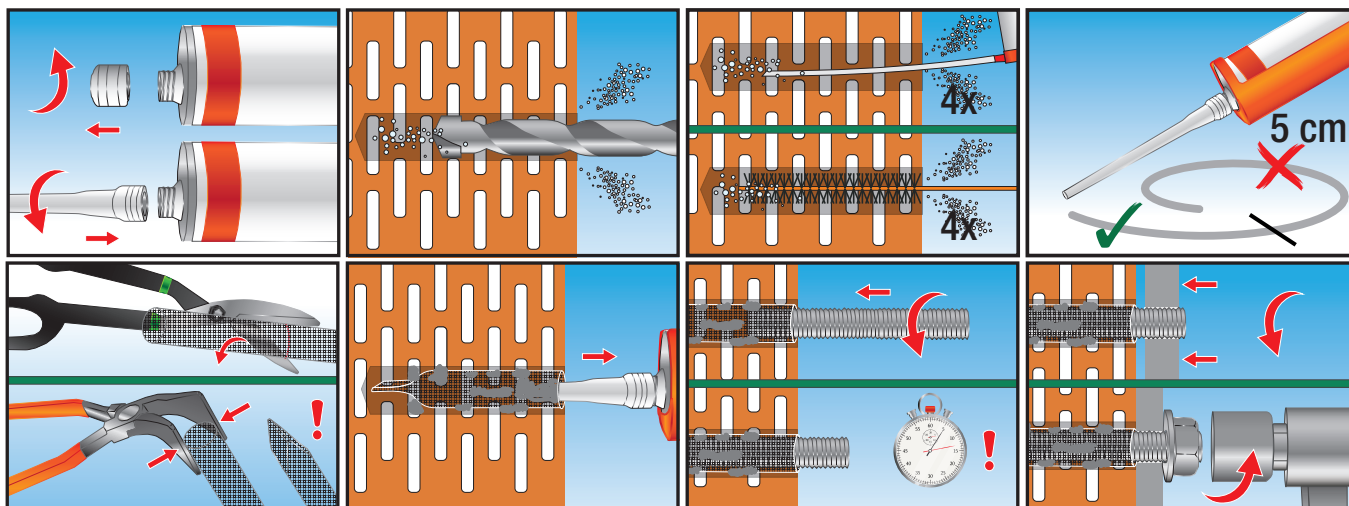
products group



**CVK**  
steel perforated sleeve for hollow materials adjustable in depth with sheet metal shears

installation sequence

Application on hollow materials with steel perforated sleeve CVK



Performance based on clean holes

Clean the hole before the installation

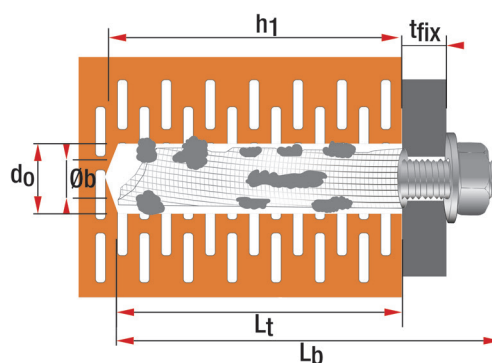
product code and technical data

Application on hollow materials with steel perforated sleeve CVK

Code	Description	d <sub>o</sub> mm	d <sub>b</sub> mm	L <sub>t</sub> mm	Ø <sub>b</sub> mm
2900	CVK 12x1000	12	9,5	1000	M8
2901	CVK 16x1000	16	12,5	1000	M10-M12
2902	CVK 22x1000	22	18,5	1000	M12-M16

- d<sub>o</sub> = Hole diameter
- L<sub>t</sub> = Anchor length
- h<sub>1</sub> = Min. hole depth
- h<sub>ef</sub> = Effective anchorage depth
- Ø<sub>b</sub> = Internal sleeve thread
- L<sub>b</sub> = Stud length
- T<sub>fix</sub> = Fixture thickness

Stud length calculation:  $L_b = L_t + T_{fix}$



Examples of applications

