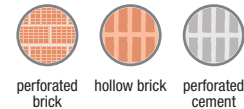


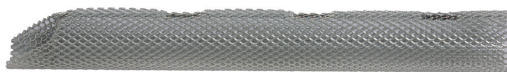
chemical anchors

Vorpa CVH-CVHA

Steel perforated sleeve



products group



CVH Ø15 - Ø17

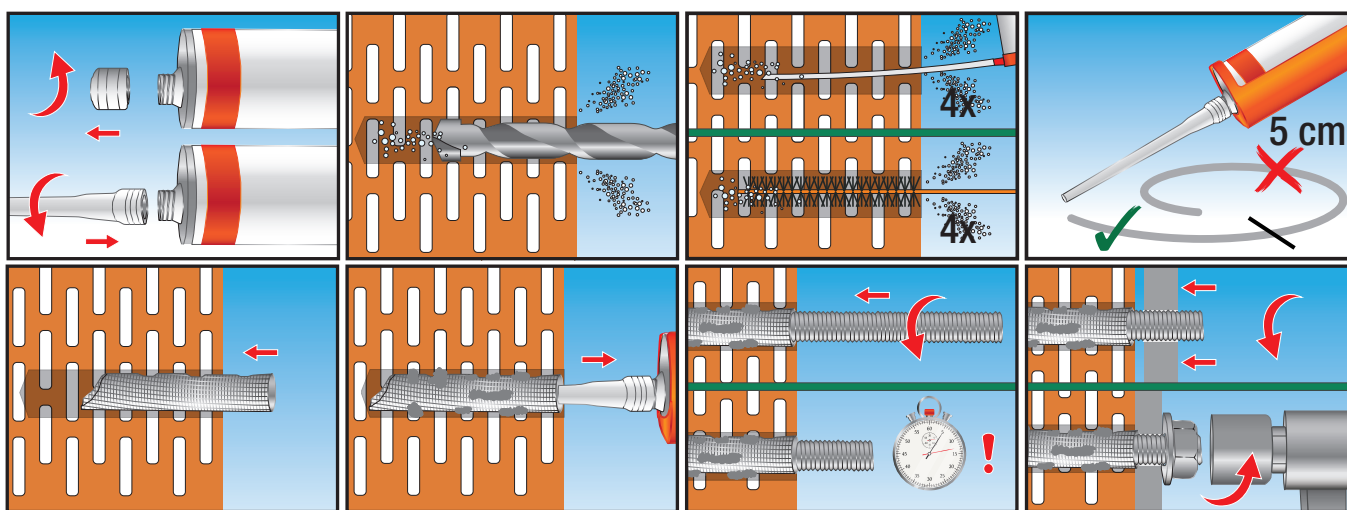
CVH - CVHA
steel perforated sleeve for hollow materials with bent end



CVHA Ø22

installation sequence

Application on hollow materials with steel perforated sleeve CVH



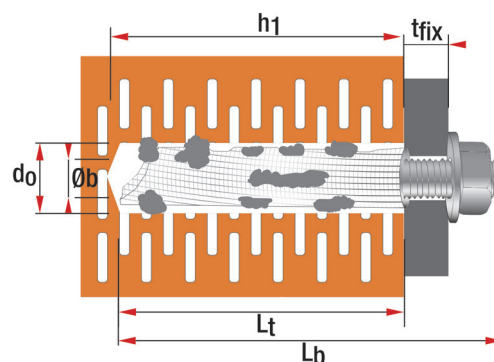
Performance based on clean holes

Clean the hole before the installation

product code and technical data

Application on hollow materials with steel perforated sleeve CVH

Code	Description	d_o mm	h_1 mm	L_t mm	\varnothing_b mm
2912	CVH 15x85	15	95	85	8-10
2913	CVH 15x130	15	140	130	8-10
2914	CVH 17x130	17	140	130	10-14
2915	CVHA 22x150	22	160	150	16-18
2916	CVHA 22x200	22	210	200	16-18
2917	CVHA 22x250	22	260	250	16-18



Examples of applications



- d_o = Hole diameter
- L_t = Anchor length
- h_1 = Min. hole depth
- h_{ef} = Effective anchorage depth
- \varnothing_b = Internal sleeve thread
- L_b = Stud length
- T_{fix} = Fixture thickness

Stud length calculation: $L_b = L_t + T_{fix}$