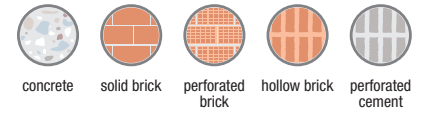


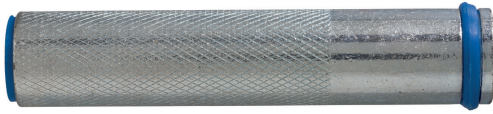
chemical anchors

Vorpa **CVD**

Steel internal threaded sleeve



products group



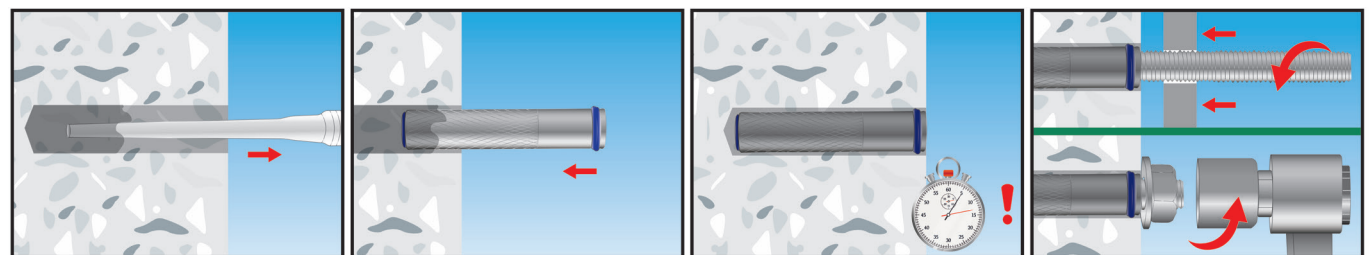
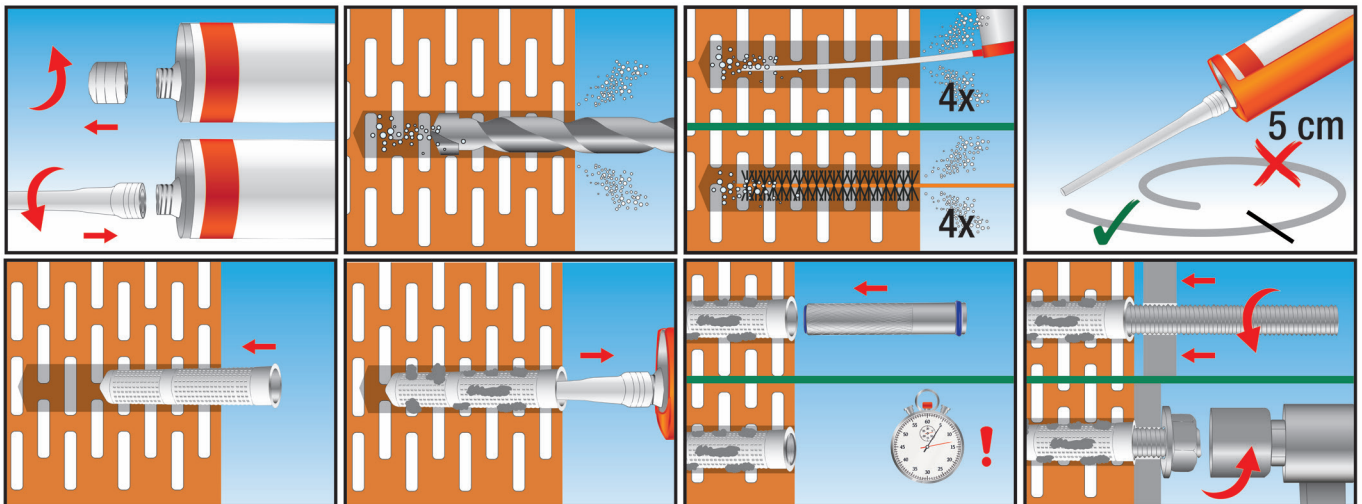
CVD
steel internal threaded sleeve

Usable for application on hollow brick with plastic sleeves and solid brick

installation sequence

Performance based on clean holes

Application on hollow materials



Application on solid materials

Clean the hole before the installation

product code and technical data

Application with steel sleeve CVD

Code	Description	d ₀ mm	L _t mm	L _f mm	h ₁ mm	h _{ef} mm	Ø _b mm
1236	CVD 12x80	14	80	55	90	80	M8
1237	CVD 14x80	16	80	55	90	80	M10
1238	CVD 16x80	18	80	55	90	80	M12

- d₀ = Hole diameter
- L_t = Anchor length
- L_f = Internal thread length
- h₁ = Min. hole depth
- h_{ef} = Effective anchorage depth
- Ø_b = Internal sleeve thread
- L_b = Stud length
- T_{fix} = Fixture thickness

Stud length calculation: $L_b = L_t + T_{fix}$

