

chemical anchors

Vorpa **CVA**

Plastic perforated sleeve

perforated
brick

hollow brick

perforated
cement

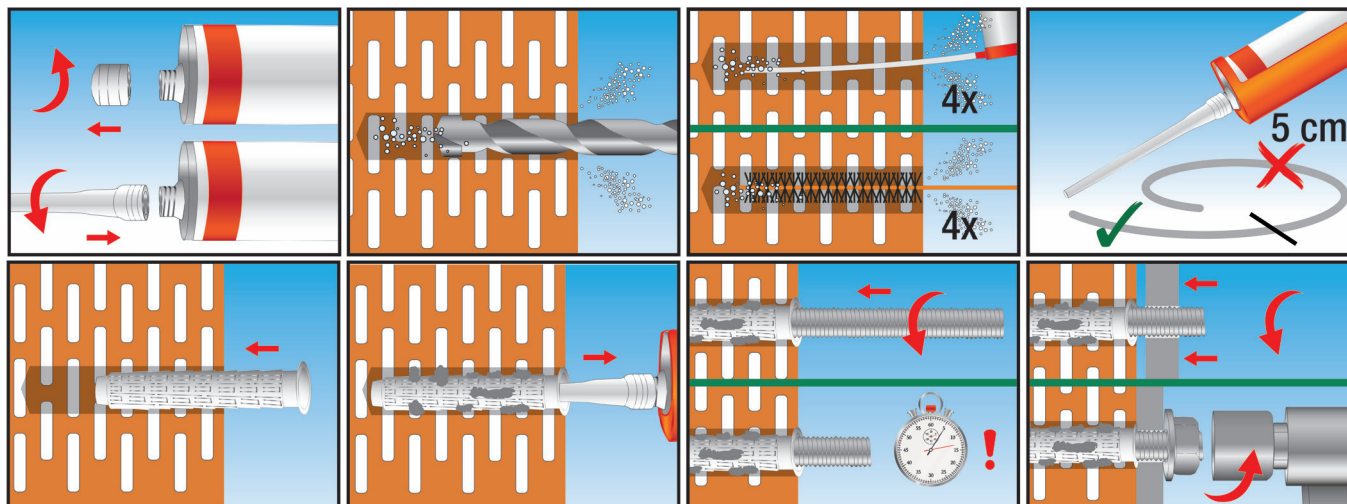
products group



CVA
plastic perforated sleeve for hollow materials

installation sequence

Application on hollow materials with plastic perforated sleeve CVA



Performance based on clean holes

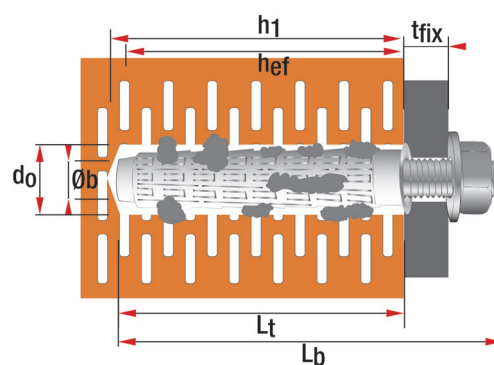
Clean the hole before the installation

product code and technical data

Application on hollow materials with perforated sleeve CVA

Code	Description	d _o mm	L _t mm	h ₁ mm	h _{ef} mm	Ø _b mm
914	CVA 13x100	14	100	110	100	M8-M10
1914	CVA 15x100	16	100	110	100	M8-M12

d_o = Hole diameter
 L_t = Anchor length
 h₁ = Min. hole depth
 h_{ef} = Effective anchorage depth
 Ø_b = Stud diameter
 L_b = Stud length
 T_{fix} = Fixture thickness
 d_b = Internal sleeve thread

Stud length calculation: $L_b = L_t + T_{fix}$ 

Examples of applications

