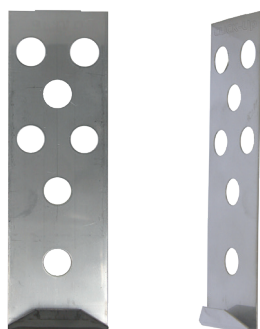


universal and frame fixings

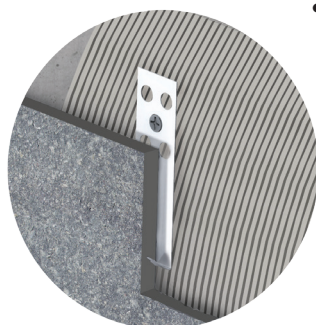
Vorpa **CLICK-UP**

Safety withholding hook for tiles

products group



CLICK-UP



Suitable for

- facade with adhesive

To fix

- ceramic slabs
- tiles



product information

Characteristics

- The glued façade is a system that makes it possible to get good-looking results and less recurring maintenance than other equivalent systems. This type of covering uses adhesive to attach ceramic slabs directly onto the plaster of the building exterior. However, to ensure the laying of slabs over 30cm it is necessary to adopt an additional safety device against detachment of the adhesive due to tensions arising from structural adjustments, stretching and extension to thermal excursions, earthquake shakings, etc.
- The concealed Vorpa Click-Up system is a patented device that ensures the connection of the ceramic slab to the wall by an invisible mechanical hook inserted in the slab itself through an engrave before laying. After having covered the slab with glue and installed it, the hook is subsequently secured to the wall by a plug.

- The Vorpa Click-Up system provides pull-out load over 350kg* for each application point stated by specific laboratory tests. This allows great safety in case of detachment of the glue between wall and slab together with fast and practical installation. (*Click-Up M-type on 11mm porcelain tiles with adhesive).
- Vorpa Click-Up safety hooks are made of 0,5mm AISI304 stainless steel in four different sizes according to thickness of slabs (minimum 6mm). They are supplied ready for assembly to back side slabs once made the incision by Click-Cut grooving toll.

Examples of application



universal and frame fixings

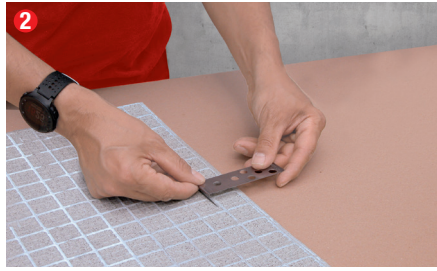
Vorpa **CLICK-UP**

Safety witholding hook for tiles

installation sequence



1 Engraving slab by grooving tool Click-Cut



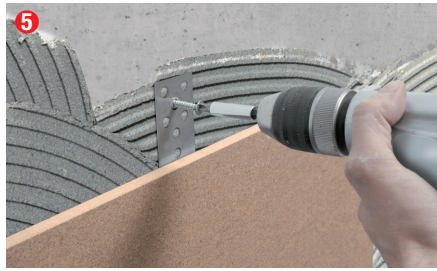
2 Insert the hook in the engrave



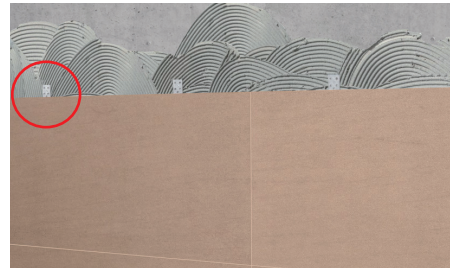
3 Laying the glue on the slab and wall



4 Install the slab to the wall with glue



5 Fix the hook with plug and screw



Work completed

Examples of application

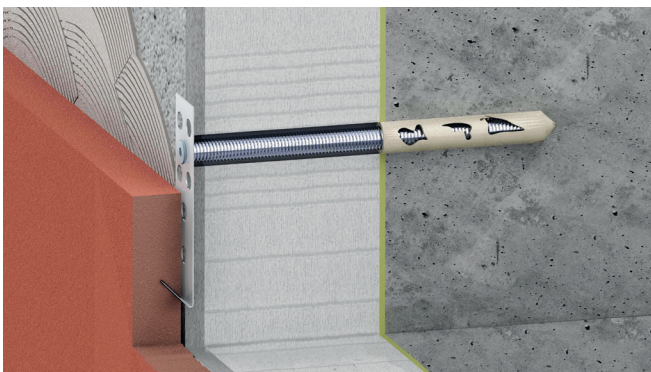


Slab back side

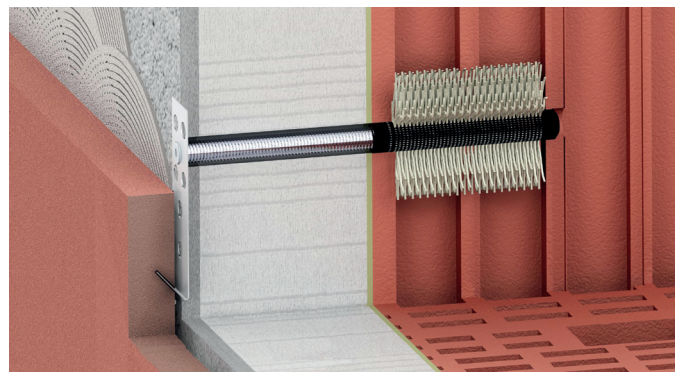


Slab front side

Insulating panels on solid masonry



Insulating panels on hollow masonry

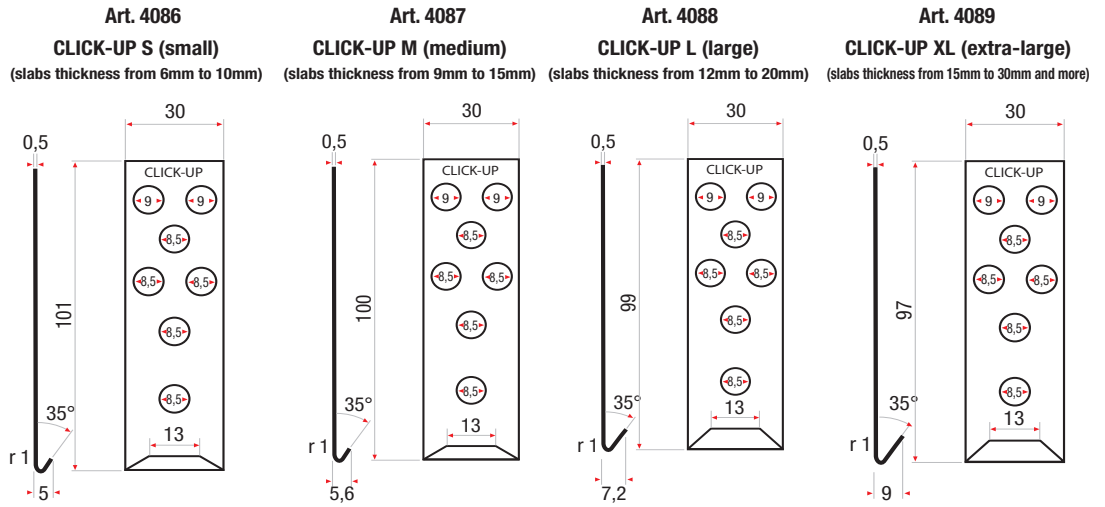
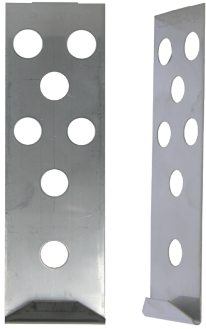


universal and frame fixings

Vorpa CLICK-UP

Safety witholding hook for tiles

product code and technical data



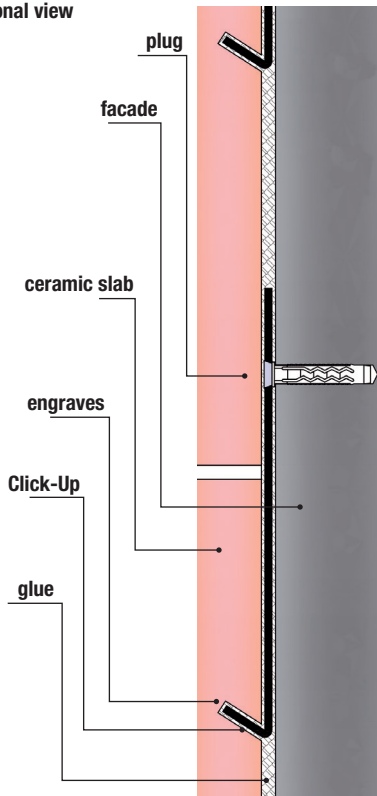
Tile length	Pieces per tile (A)	Click-Up recommended load (B)				Pieces per box
		S (small)	M (medium)	L (large)	XL (extra large)	
10 ≤ 60 cm	1	45 daN	55 daN	60 daN	65 daN	500
60 ≤ 150 cm	2					
150 ≤ 240 cm	3					
240 ≤ 320 cm	4					

(A) The number of hooks is indicative. However, it is recommended being the designer to identify the number of hooks for tile/slab according to dimensions, base material, local regulations and environment conditions.

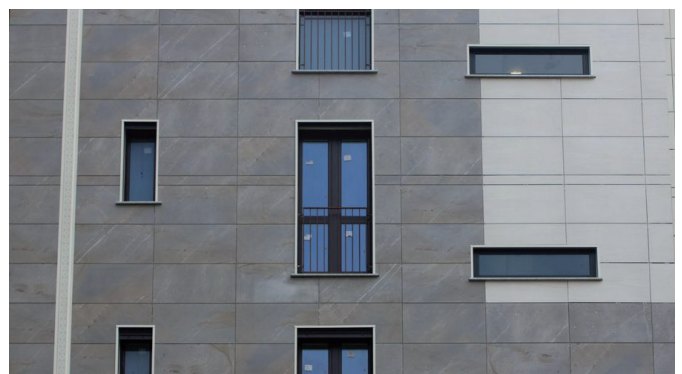
(B) Recommended loads are stated applying a safety factor equal to 4.



Sectional view



Examples of application



universal and frame fixings

universal and frame fixings

Vorpa CLICK-UP

Safety withholding hook for tiles

accessories

Threaded bar for application on masonry coated with insulating panels M6x16



Code	Description	Internal thread	Max thickness of insulating panel mm	Min. embedment depth on masonry mm	Ø hole on hollow masonry mm	Ø hole on solid masonry mm
91038	Threaded bar Ø12x160	M6x14	80	80	16	14
91075	Threaded bar Ø12x180	M6x14	100	80	16	14
91042	Threaded bar Ø12x200	M6x14	120	80	16	14

Other sizes on request

Chemical anchor PSF



ETAG 001-05
for non cracked concrete
M8-M16 threaded bar



ETAG 029 for masonry and
hollow walls - Cat.c,w/d M10
Steel elements according to
Table 2 Annex 5 ETA-11/0511



Test report nr. 276986 14/12/2010
on wood substrates



Store upright

Code	Description	Content ml	Mixer n°
1124	PSF 300	300	1
1002P	PSF 400	410	1
1005	Mixer		

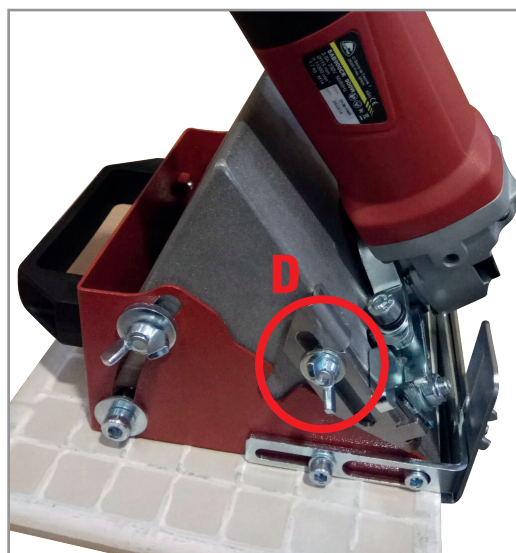
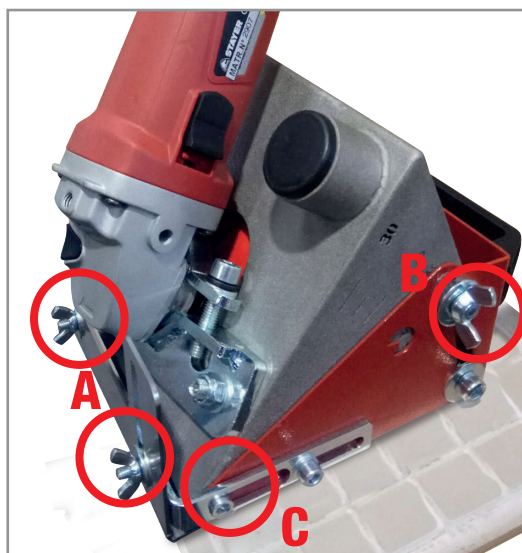
Perforated plastic sleeve CVX N to be used on hollow masonry



Code	Description	Ø hole on hollow masonry mm
58732	Perforated sleeve CVX N Ø16x85	Ø16

Click-cut grooving tool

Code	Description
4099	Grooving tool Click-Cut



A - Wing nut to adjust the slab thickness and block.

B - Wing nut to adjust the cutting inclination, the right inclination of Click-Cut flute Device for engraving slabs is 55° for each size Click-Up hook.

C - Flange to adjust the cutting position.

D - Wing nut to adjust the cutting depth.