

Vorpa CLAPS

Nylon fixing for frames and subframes

products group



CLAPS

To fix

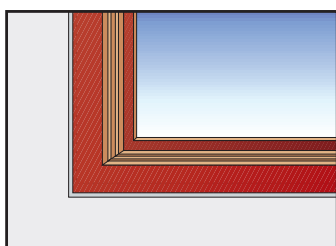
- door frames
- window frames
- doors and windows
- subframes

product information

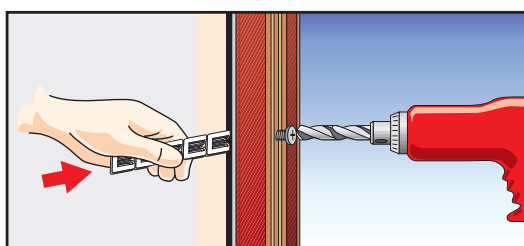
Characteristics

- fixing in plastic material for fixing frames and subframes

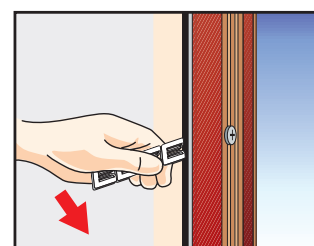
installation sequence



Place the subframe



Insert the fixing of plastic material at the point of the window in which the fixing will be carried out

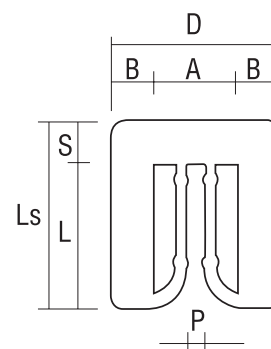


Once the fixation has been completed, remove the unused claps

product code and technical data

Code	Description	Thickness mm	Colour
1870	CLAPS 2	2	neutro
1871	CLAPS 3	3	grigio
1872	CLAPS 5	5	nero

- Ls = 40 mm
- L = 32 mm
- S = 8 mm
- P = 4,5 mm
- D = 36 mm
- A = 18 mm
- B = 9 mm



Examples of applications

