

Vorpa BITUM

Elastic bituminous adhesive

products group and information



BITUM

Suitable for

- concrete
- masonry
- metal - copper surfaces

To fix

- fills and seals gaps/cracks in most roofing applications
- bonds to: concrete, roofing felt, lead, zinc, steel and masonry
- for bedding tiles, slates and flashing into position
- joint sealing on gutters and down pipes
- sticking down loose roofing felt
- joint sealing between corrugated asbestos cement and iron sheeting etc.

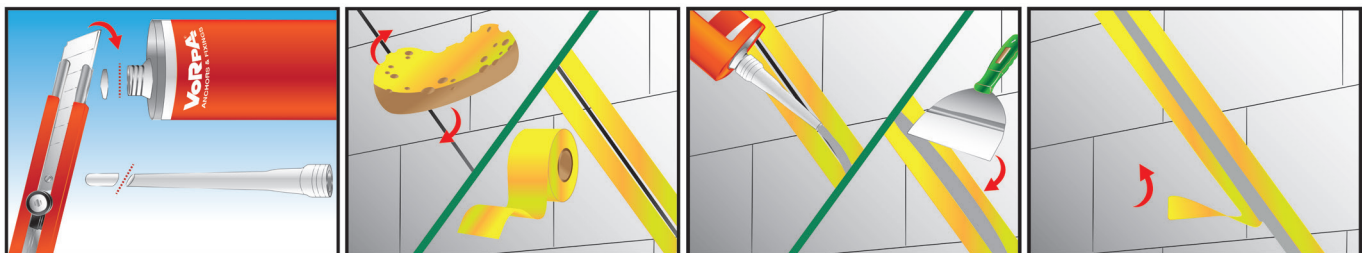
Characteristics

- incorporates polymer additives to improve adhesion
- can be applied in wet conditions, even under heavy rain
- semi drying - remains permanently elastic beneath surface skin
- high solids formulation - excellent gap filling properties without shrinkage
- excellent external weathering properties
- form ready to use thixotropic paste, black in colour
- elastoplastic sealant adhesive based on bituminous elastomeric resins which adhere on most common building materials, even on wet surfaces, forming a flexible film
- for bonding and sealing of roofs, insulation materials (excluded expanded PS), ceramic tiles, roofing tiles, polymeric surfaces (plastics) free of plasticizers
- to seal and waterproof joints, cracks, various breakings, car body shells, etc.
- adheres on concrete, zinc, wood, aluminium, metal sheet, etc
- good occasional resistance to solvents, except turpentine and mineral oils
- not overpaintable, not compatible with other sealants

Suggestion for use

- surfaces must be sound, clean and dry, free of oil and other contaminants. Apply with sealant gun in curbs. Complete curing depends on width and atmospheric conditions and may take from 12 hours to 2 days. Anyway, after some hours a good adhesion and consistence are obtained. Tools can be cleaned with mineral turpentine. Do not use on glass or PVC. Do not use internally

installation sequence



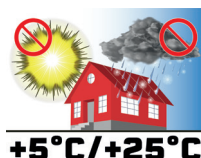
product code and technical data

Code	Description	Content ml	Curing time	Temperature resistance	Application Temperature	Gun to be used	Box pcs	Shelf life
23000	Bitum Vorpa	310	> 12 hours < 2 days	-35°C ÷ +110°C	-5°C ÷ +30°C	silicone type	12 pcs	24 months in original closed cup

Clean the surfaces before the installation

Physical properties

Specific weight 1,02 g/cm3
Flash point >39°C



Store upright