



# Vorpa AVZ T Ø50

Steel anchor for scaffolds standing on the ground

products group



**Suitable for**

- concrete
- natural stone
- solid brick

**To fix**

- scaffolding standing on the ground

product information

**Characteristics**

- torque controlled expansion anchor made of galvanized steel composed of anti-rotation cold formed body, expansion conical nut and eyebolt Ø50mm
- the eyebolt can be used several times thanks to the anchor spare part
- eyebolt neck with flat slot to tight by wrench
- anti-rotation during the installation procedure

**Installation**

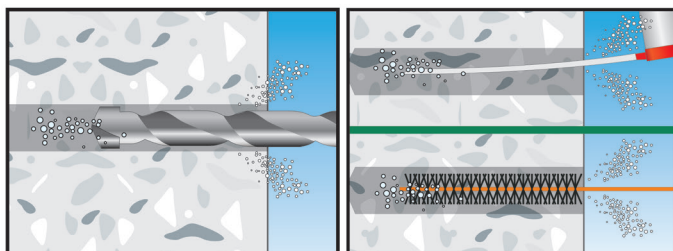
- to be mounted aligned the wall

**Suggestion for use**

- make sure the scaffold and eyebolt are well positioned each other
- apply a proper safety factor according to the each situation
- always check load bearing capacity values in the table
- respect the installation data
- **clean the hole before the installation**

installation sequence

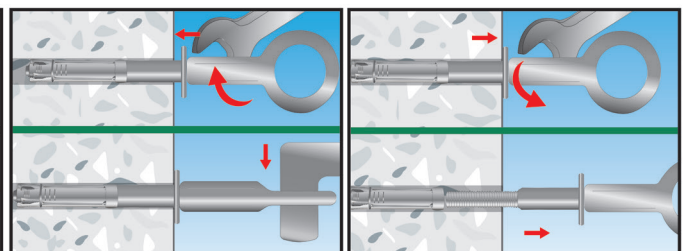
**1) installation procedure**



Drill the masonry.  
Clean the hole by using proper cleaning brushes and pump

Insert the anchor in the hole.  
Screw the eyebolt applying the correct torque and set the washer aligned to the wall

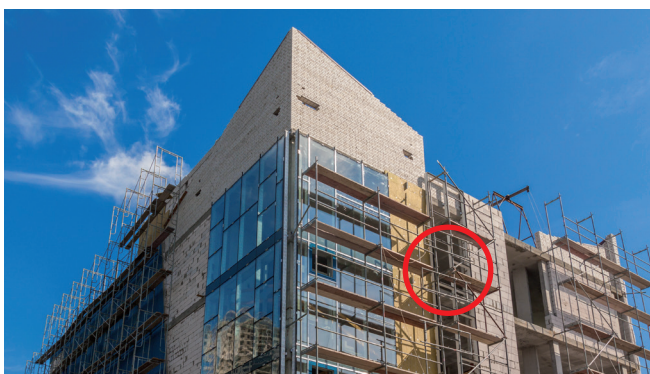
**2) to re-use the eyebolt**



Installation completed

Close the hole with the proper cap

**Examples of applications**



# Vorpa AVZ T Ø50

Steel anchor for scaffolds standing on the ground

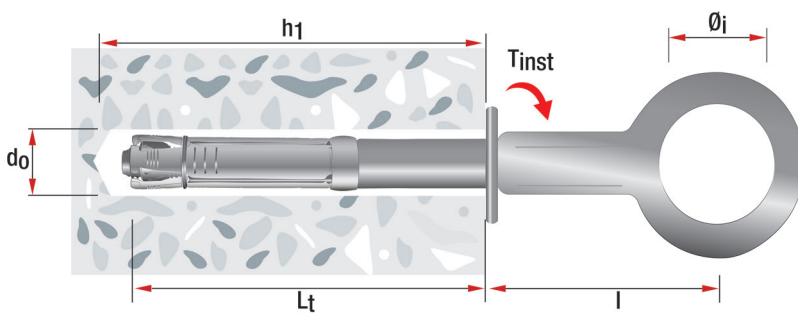


product code and technical data



AVZ T  
eyebolt Ø50

Code	Description	d <sub>o</sub> mm	L <sub>t</sub> mm	h <sub>1</sub> mm	T <sub>inst</sub> mm	Ø <sub>i</sub> mm	l mm	ch mm
1817	AVZ T 16/110 M10	16	110	120	50	50	100	22



d<sub>o</sub> = Hole diameter  
 L<sub>t</sub> = Anchor length  
 h<sub>1</sub> = Min. hole depth  
 T<sub>inst</sub> = Torque  
 Ø<sub>i</sub> = Internal eyebolt diameter  
 l = Axial spacing  
 ch = Spanner

Accessories



code 833



code 91054

Code	Description	d <sub>o</sub> mm	Length mm	Sizes mm
833	AVZ M10-Ø16	16	60	
91054	Washer Ø16			18x45x3



Example of applications

AVZ T

Pull-out values in daN for applications on concrete C20/25

1 daN ≈ 1 kg

1.600

**ATTENTION: An appropriate safety factor ≥ 3 should be applied on these values**

- As for applications on natural stones and solid bricks it is not possible to show specific loading values because of the various materials properties
- It is suggested to always make pull out tests before using the anchors
- For any particular need please contact Vorpa technical department