

touch



issue no. 21 | october - november - december 17

Armani 5th Avenue:
The Latest Addition
to the Eminent
Armani Name

**Perforated Concrete
Exteriors:**

Varied Selection of
Unconventional Structures

Eco Touch:

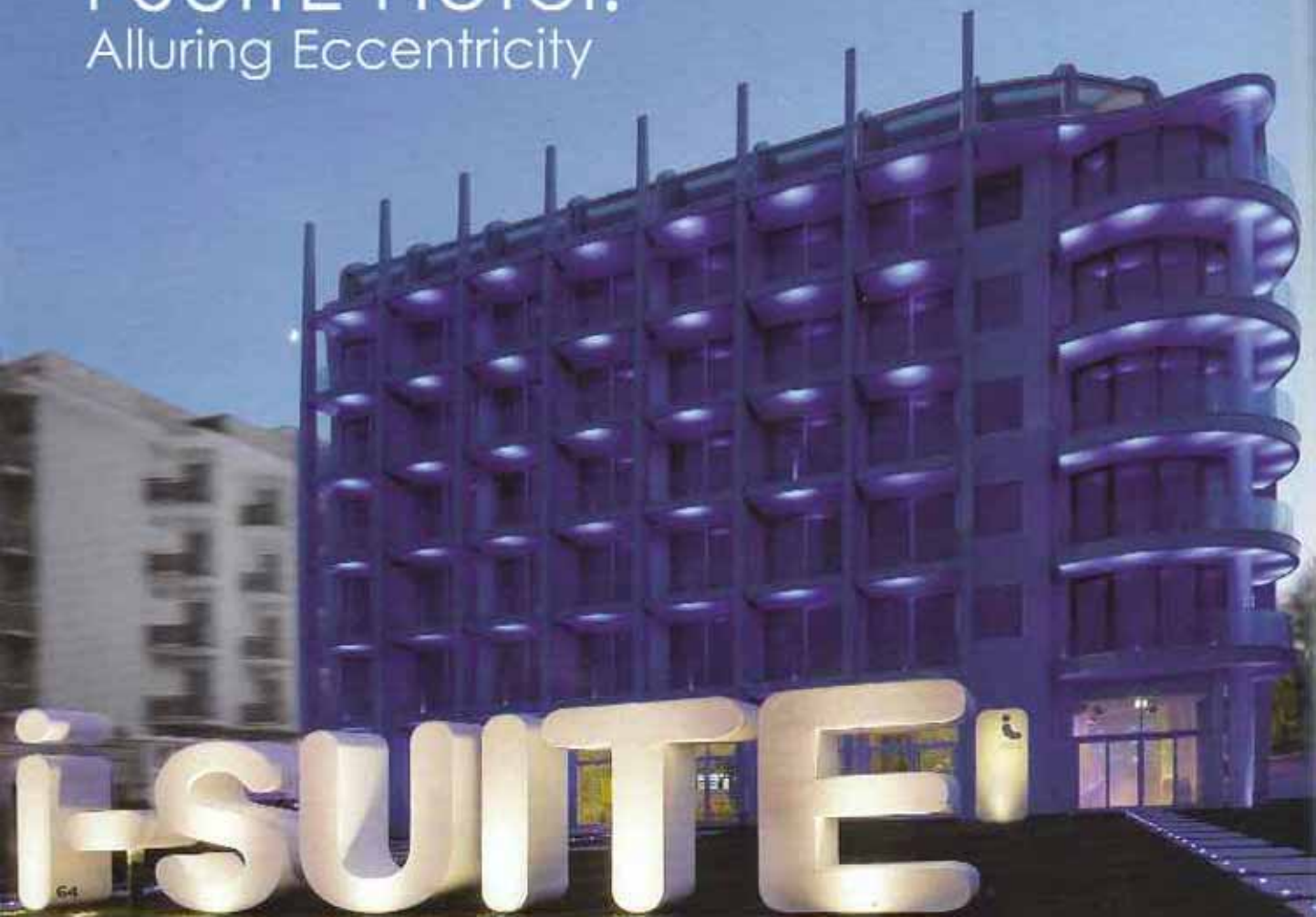
Sustainable Architecture...
A Reinvention of Urban Living



Photos: Jürgen Eheim

i-SUITE Hotel:

Alluring Eccentricity





Standing out from all the hotels in Rimini, Italy, the i-SUITE Hotel is surely one of the most fascinating hotels of its time. Out of this world exterior and eccentric modern and luxurious interiors, this hotel is an Architect Simone Micheli firm artistry.





Guests are welcomed with glowing walls and furniture that seem to be lit from within and neon-hued columns shaped like tree trunks. We see the funky harmony of the green, silver and white colours embellished with graphic swirls. To design a project with such visionary aspects is simply brilliant.





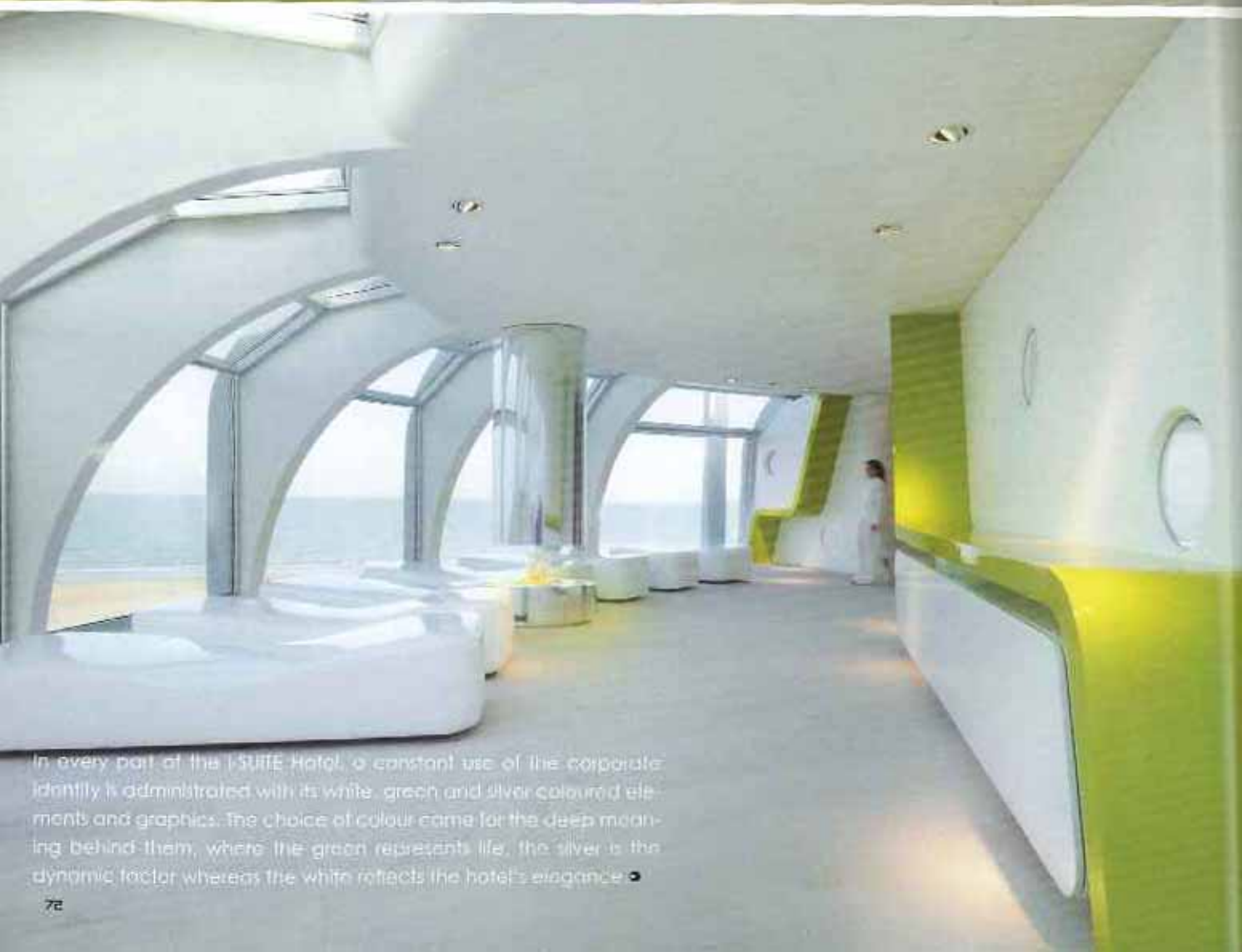
Another wonderfully off-boat features are the choose-like light fixtures and the mirrored walls with spiral motifs that are spread throughout the i-FAME restaurant. There not only will the guests enjoy their delicious meals, but also feast on wonderful surroundings of the interiors and the outdoor garden and galactic formed pool.

The hotel is made up of fifty-four high-tech furnished suites spread between two branches of the hotel by means of a corridor.





A suite on the fifth floor covers around seventy square meters, which has a gigantic circular bed that swivols allowing the guest to have a pleasant view of the sea and the whole suite area. A cosy living room equipped with a couch, fireplace and LCD television cover the entertaining area of the suite. Divided by means of a full height glass wall that can be opened completely, is a bathroom by the bedroom.



In every part of the I-SUITE Hotel, a constant use of the corporate identity is administered with its white, green and silver coloured elements and graphics. The choice of colour came for the deep meaning behind them, where the green represents life, the silver is the dynamic factor whereas the white reflects the hotel's elegance. ◀