

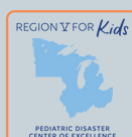


WINTER SCHOOL PEDIATRIC DISASTER MEDICINE: FOUNDATIONS AND FUTURE

March 3rd-7th, 2025



**PARACELSUS
MEDICAL
UNIVERSITY**



A photograph of a modern building with a light-colored facade. The building features several windows and two large arched glass doors. A tree with yellow leaves stands in the foreground, partially obscuring the right side of the building. The word "WELCOME" is overlaid in blue text on the left side of the image. The scene is set outdoors on a grassy area with a paved path in the foreground. The lighting suggests a bright day with shadows cast on the building's wall.

WELCOME

ABOUT PMU

The Paracelsus Medical University (PMU) is a young, dynamic private university with a global outlook.

It aims to solve pressing medical and health issues that our societies face today through innovative and impactful teaching and research activities within and beyond its borders in the fields of medicine, pharmacy, and nursing.

With 23 university institutes, 4 research centres, and 6 research foci, the PMU, together with the Salzburg University Hospital, is able to offer first-class education programs and excellent research. In February 2014, the PMU established its second Campus in Nuremberg in cooperation with the Klinikum Nuremberg.

AUSTRIA

Strubergasse 21
5020 Salzburg

GERMANY

Ernst-Nathan-Straße 1
90419 Nuremberg



HOW TO REACH US?



FROM THE CITY CENTRE (FERDINAND-HANUSCH-PLATZ) WITH THE PUBLIC BUSES:

- Bus 4 - stop: "Stadtwerk Lehen"
- Bus 7 - stop: "Strubergasse"
- Bus 24 - stop: "Stadtwerk Lehen"
- Bus 9 - stop: "Salzburg Landeskrankenhaus"
- Bus 27 - stop: "Salzburg Landeskrankenhaus"



FROM SALZBURG AIRPORT:

- Bus 2 - stop: "Gaswerkergasse"

FROM THE MAIN TRAIN STATION:

- Bus 27 - stop: "Landeskrankenhaus (Lindhofstraße)"
- Bus 2 - stop: "Salzburg Gaswerkergasse"
- Bus 1 - stop: "Salzburg Gaswerkergasse"



S-BAHN LINES:

- S2 and S3 - stop: "Salzburg-Mülln-Altstadt"

Ticket and information apps:



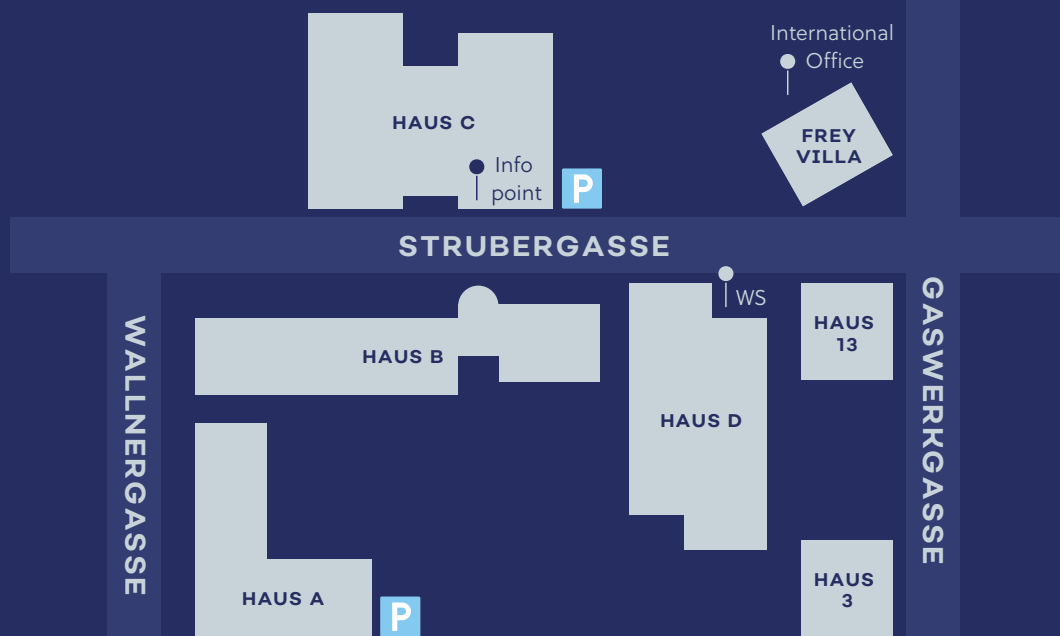
OUR CAMPUS

All theory sessions/lectures, including the first lecture on Monday, will take place at the PMU campus in House D, Lecture Hall 31.

Please take note of the locations indicated in the final program.

Any room changes will be announced accordingly.

Campus guide:



WINTER SCHOOL

The program is a collaboration between Paracelsus Medical University (PMU), Uniklinikum Landeskliniken Salzburg (SALK), the World Association for Disaster and Emergency Medicine - Europe Chapter (WADEM-EU), the European Council for Disaster Medicine (ECDM), Harvard Medical Faculty Physicians at BIDMC Fellowship in Disaster Medicine, and other prospective partners (WHO Academy, UNICEF, and Eurochild)

Overview

The "Pediatric Disaster Medicine: Foundations and Future" course is a week-long intensive training program focused on pediatric disaster medicine, an emerging field that addresses the unique needs of children in disaster situations. As the first of its kind in Austria, this course will equip healthcare professionals with essential knowledge, practical skills, and hands-on experience necessary to manage pediatric populations in disaster settings.

The program will cover critical topics, including pediatric triage, mental health support for children, disaster preparedness strategies, and the integration of pediatric care into disaster response systems. Participants will benefit from lectures, case studies, and simulations led by internationally recognized experts from leading institutions.

Program Details

Duration: 5 days (March 3rd-7th, 2025)

24.02.2025 1st Virtual session

03.03.2025 - 07.03.2025 Program (on site)

14.03.2025 2nd Virtual session and closing

Location: Paracelsus Medical University, Salzburg, Austria

Target Audience: Multi-sectoral health professionals involved in disaster preparedness and response, including pediatricians, emergency medicine physicians, nurses, paramedics, administrators, researchers, industry and disaster management experts.

Certification: All participants will receive a certificate of completion. Professionals can apply for Continuing Medical Education (CME) credits, and Student participants will receive 3 ECTS.

Application deadline: February 15, 2025

Registration fee includes tuition, laboratory work, social events, lunches, snacks and drinks the week, and certificate of participation at the end. Additional meals, travel, and accommodation are not included and must be arranged for by the participants.

Student: € 449,-

Non-student: € 799,-

Erasmus+ eligibility

This course awards 3 ECTS and follows a BIP-style format. Students can therefore apply for Erasmus+ funding at their home institutions for a blended short-term mobility.

More info:



Online registration:



WINTER SCHOOL

PEDIATRIC DISASTER MEDICINE: FOUNDATIONS AND FUTURE

Goals of the Course

Establish Pediatric Disaster Medicine Expertise: Equip participants with foundational knowledge to handle pediatric care in disaster settings.

Hands-on Skill Development: Practical training through simulations to manage pediatric triage and care in emergencies.

Key Benefits for Sponsors

Visibility and Global Recognition: Align your brand with cutting-edge education and international collaboration in disaster medicine.

Impactful Contribution: Support a program that builds pediatric healthcare capacity for disaster preparedness, risk reduction and response, a critical need in today's world.

Networking Opportunities: Engage with leading experts and institutions in the field of pediatrics and disaster medicine.

Virtual sessions

The virtual sessions are mandatory only for participants who are receiving the Erasmus+ grants. Non-Erasmus participants are welcome to join.

1.Virtual session, 24.02.2025, 4:30pm - Onboarding and organisational details, key concepts and guest lectures.

2.Virtual session: 14.03.2025, 4:30pm - Formative evaluation of your learning outcomes and general feedback about the program.



[Scan the QR code to access MS Teams channel for Winter School](#)

SPEAKERS



*DR. PAUL BARACH
THOMAS JEFFERSON UNIVERSITY AND LEAD,
DISASTERS AND EMERGENCIES, ASPHER*



*DR. GREG CIOTTONE
HARVARD BIDMC DISASTER FELLOWSHIP*

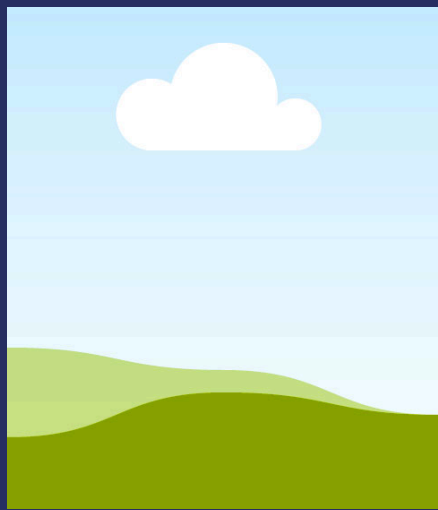


*PROF. DONALD A. DONAHUE, DHED, MBA,
MSJ*

SPEAKERS



PATRICIA FROST, RN, PHN, MS, PNP



*SEVAN GERARD, MA, EMT-P
WADEM-EU*



*DR. QUDSIA HUDA
WDO HQ*

SPEAKERS



DR. CHRISTOPHER NEWTON
UCSF BENIOFF CHILDREN'S HOSPITALS



DR. TONA MCGUIRE

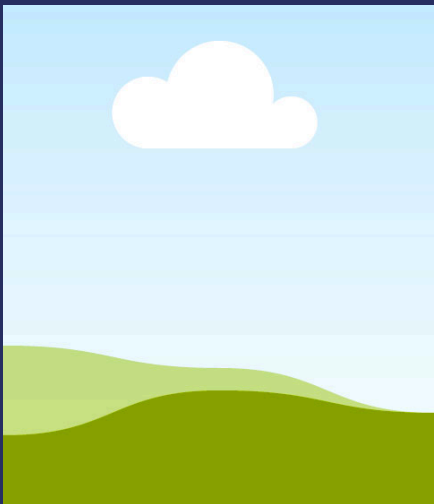


DR. ROBERTO MUGAVERO
CEMEC

SPEAKERS



DR. VIRGINIA MURRAY

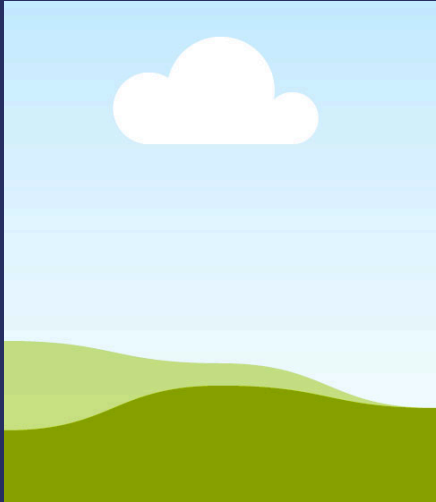


*DR. JOHN QUINN
CHARLES UNIVERSITY PRAGUE*



*DR. FLAVIO SALIO
WHO EMT*

SPEAKERS



DR. CHIP SHRIVER



DR. VAN TRIMPONT
ICI BELGIUM



DR. FLORIAN WICHLAS
PMU SCHOOL OF MEDICINE



ACCOMMODATION SALZBURG

- [Motel One](#): (10 min. walk)
- [IMLAUER Hotel](#): (15 min. walk)
- [Das Salz](#): (6 min. walk)
- [Riverside Hotel](#): (4 min. walk)
- [Hotel Lehenerhof](#): (8 min. walk)

Note: . The PMU has an existing agreement with Motel One Salzburg-Mirabell, and you may avail of their special rates (please state that you are a PMU Winter School participant when booking). All other providers are not affiliated with the PMU, and therefore we cannot take responsibility for their actions.





ACCOMMODATION SALZBURG

- [Yoho International Youth Hostel Salzburg:](#) (20 min. walk)
- [MEININGER Salzburg City Center:](#) (20 min. by bus)
- [a&o Salzburg Hauptbahnhof:](#) (20 min. walk)
- [Guesthouse Salzburger Studentenwerk:](#) (20 min. walk)
- [Short term rental Salzburg](#)
- [The Seminary Guest House, Salzburg:](#) (20 min. walk)
- [Katholisches Hochschulwerk:](#) (25 min. walk)
- [ÖJAB \(Austrian Young Workers Movement\)](#)



DURING YOUR STAY

SALZBURG DINING AND SHOPPING



SALZBURG EVENTS and SALZBURG SIGHTS



SALZBURG MUSEUMS





PMU INTERNATIONAL OFFICE

Postal address: International Office, Strubergasse 21,
5020 Salzburg, Austria

Email address: international.office@pmu.ac.at

Physical address: Strubergasse 16, Frey Villa Building,
1/F

<https://international.pmu.ac.at/>

CONTACTS

DR. ROSALYN EDER, MA: T: +43 662 2420-80290

AJDA MEDVEŠEK, MA: T: +43 662 2420-80291

MAIA SEEGER, BA: T: +43 662 2420-80292

IN CASE OF EMERGENCY

International emergency: 112

Police: 133

Fire department: 122

Ambulance / medical emergency: 144

Mountain rescue service: 140

Poison center: +43 1 406 43 43

PARACELSUS MEDICAL UNIVERSITY

Strubergasse 21, 5020 Salzburg

Tel.: +43 (0)662 / 2420-0

Fax: +43 (0)662 / 2420-80009

Email: infopoint@pmu.ac.at

www.pmu.ac.at

Infopoint, House C

Mo.-Fr. 08:00 - 16:00 Uhr