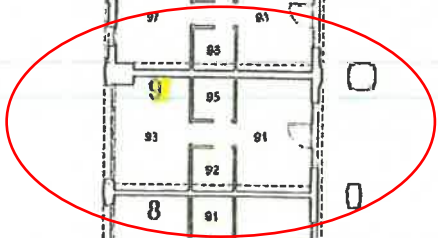
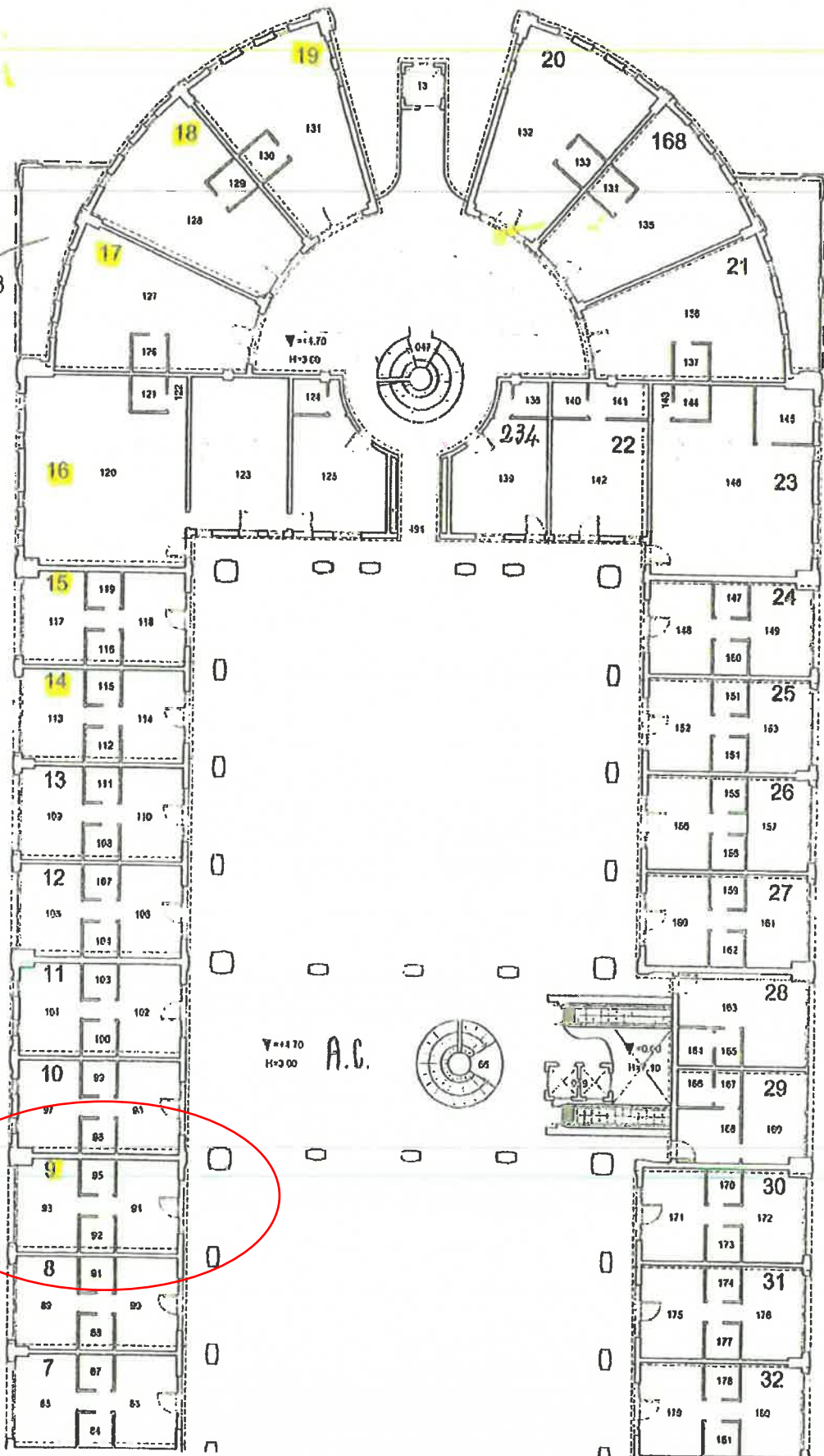
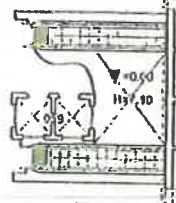


A.C.
SUB. 17-18



V=+4.70
H=3.00
A.C.



	116
423	119
422	122
421	125
420	128
419	235
418	131
417	134
415	137
	140
413	143
412	146
411	149
410	152
409	155
408	
407	

120	121
123 442	124 443
126 444	127 415
129 446	130 417
132 448	133 449
135 452	136 453
138 454	139 455
141 456	142 457
144 458	145 459
147 460	148 461
150 462	151 463
153 464	154 465
156 466	157 467

84 ⁵⁴³	105 ⁵⁴²
545	193 ⁵⁴⁴
196 ⁵⁴⁷	195 ⁵⁴⁶
196 ⁵⁴⁹	197 ⁵⁴⁸
10 ⁵⁵¹	198 ⁵⁵⁰
199 ⁵⁵²	32 ⁵⁵²
555	12 ⁵⁵⁴
A.C. 25-26 ⁵⁵⁷	556 ⁴⁷
233 ⁵⁵⁹	558 ¹²
97 ⁵⁶¹	560 ²⁰⁰
201 ⁵⁶³	450
202 ⁵⁶⁵	451
567 ¹	562
238	
55	

395 ³⁹⁴
621
627
A.C.
104 ⁶¹⁸
105 ⁶¹⁷
143 ⁵²⁷
619
231 ⁶¹³
28 ⁶¹²
230 ⁶¹⁰
98 ⁶⁰⁹
8 ⁶⁰⁷
33 ⁶⁰⁶
24 ⁶⁰⁴
603
209 ⁶⁰²
6 ⁶⁰⁰
A.C. 141-149 ⁵⁹⁸
17 ⁵⁹⁷
208 ⁵⁰⁹
204 ⁵⁰⁷
206 ⁵⁹³
205 ⁵⁹¹

168	460	582	584	586	587	588	589
74		58	5	75	2	203	

158	159	160	161	162	163	164	165
406		404	403	402	401	400	599